

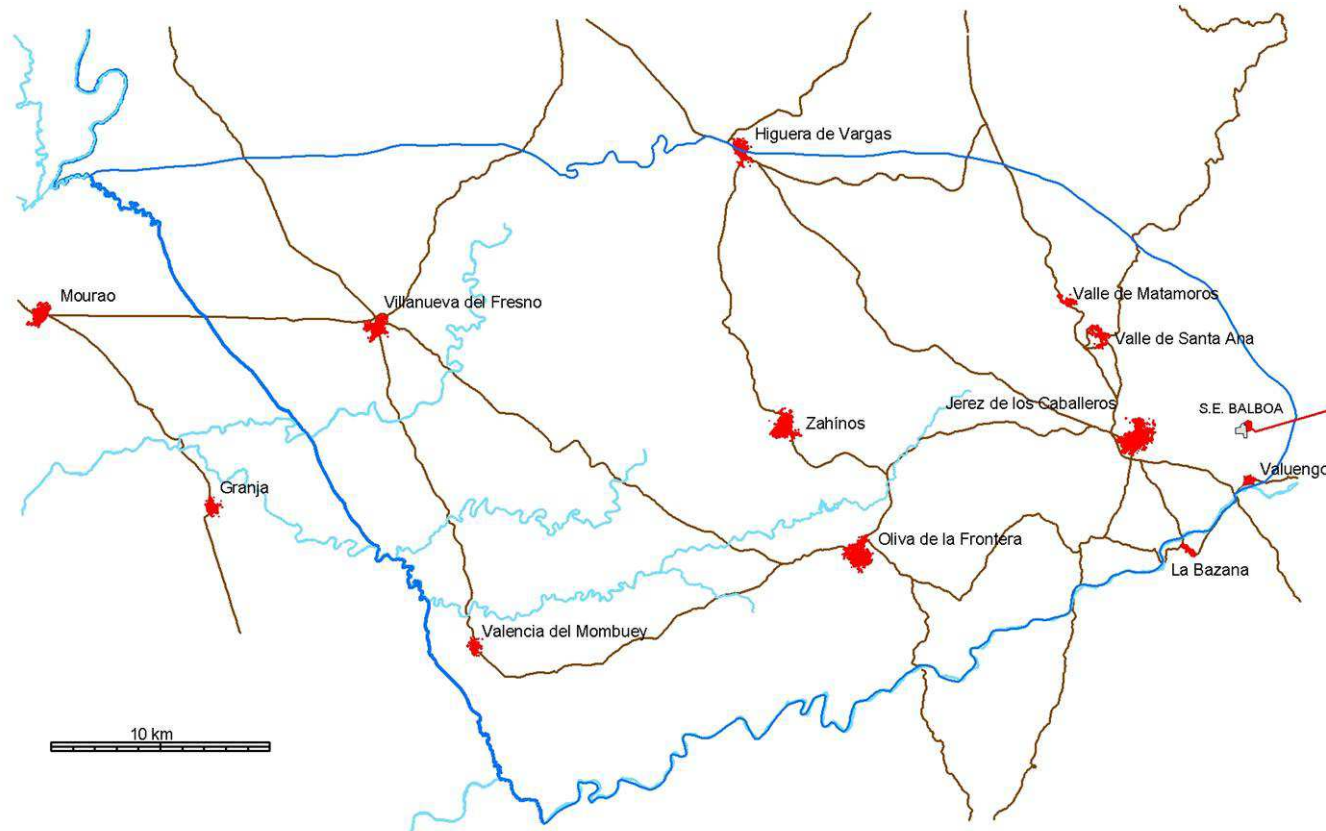


RED ELÉCTRICA
DE ESPAÑA

**Línea eléctrica doble circuito a 400 kV
Balboa-Alqueva**

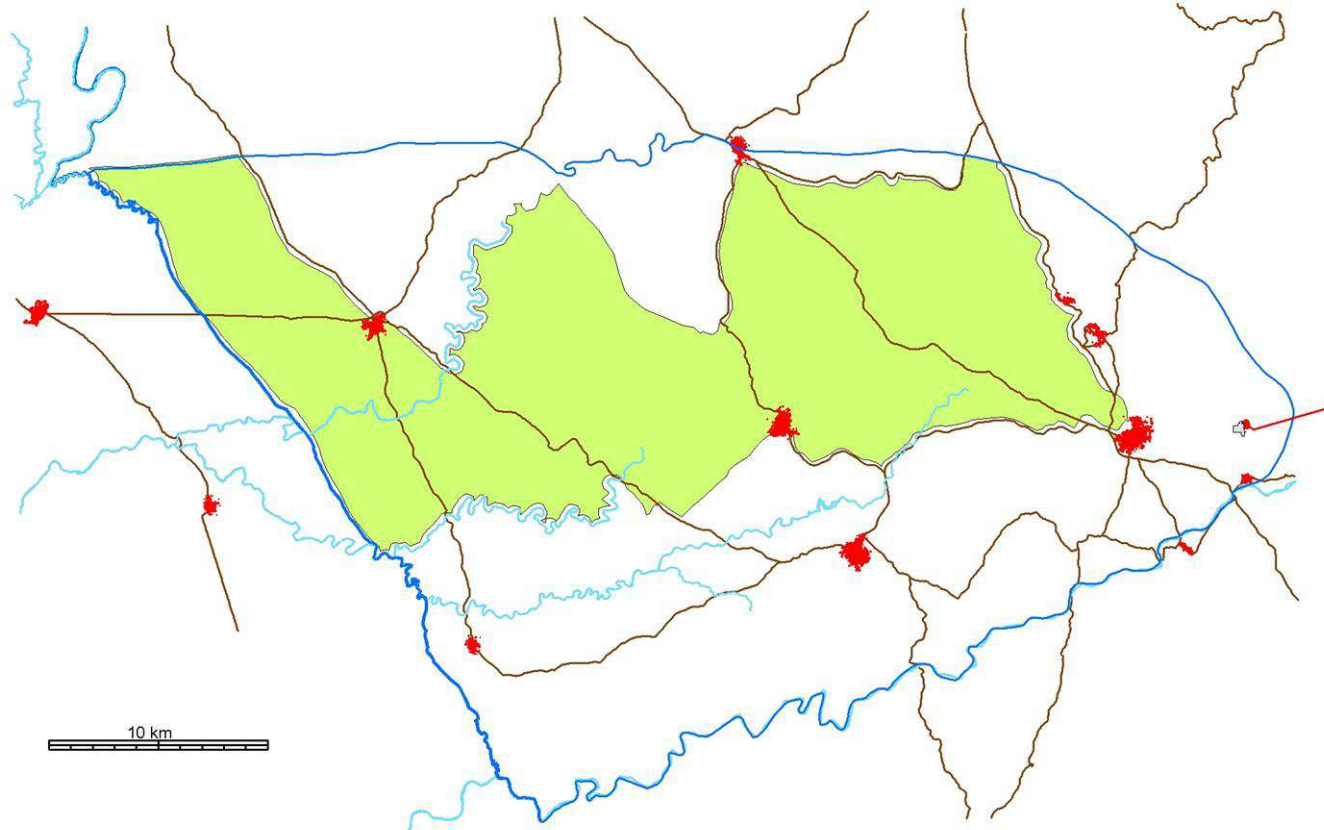


Inventario ambiental. Ámbito de estudio



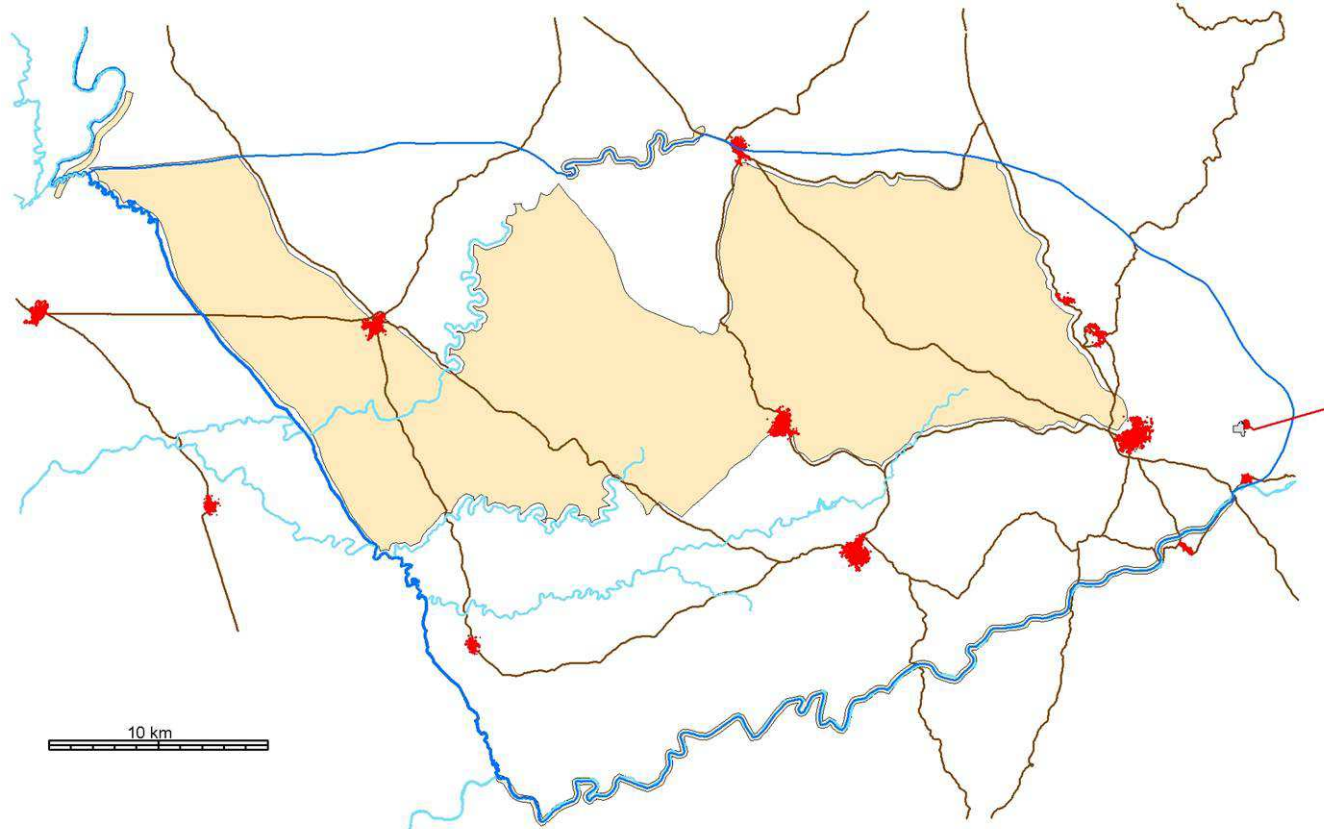


Red Natura 2000 (Dir. 79/409/CEE) Zonas de Especial Protección para las Aves (ZEPA)



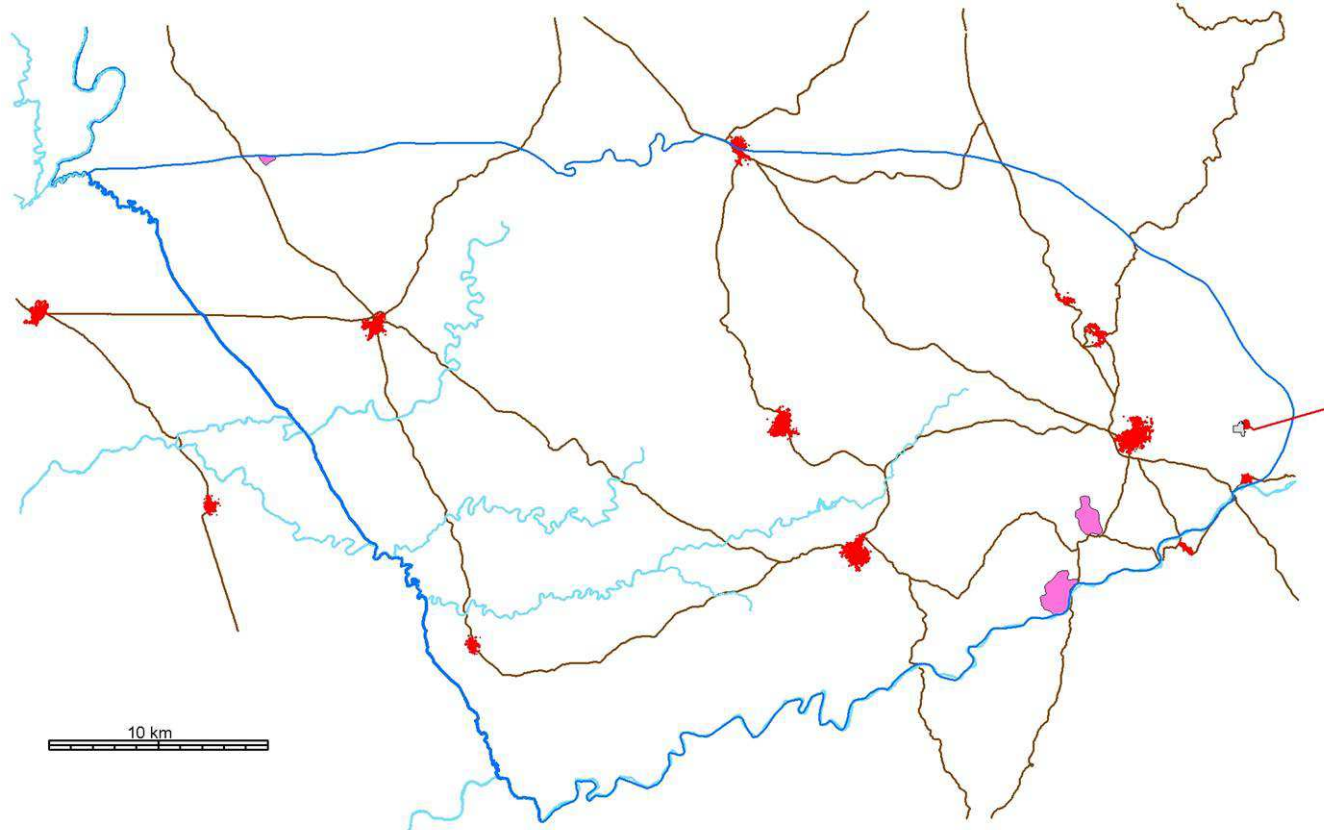


Red Natura 2000 (Dir. 92/43/CEE) Lugares de Importancia Comunitaria (LIC)



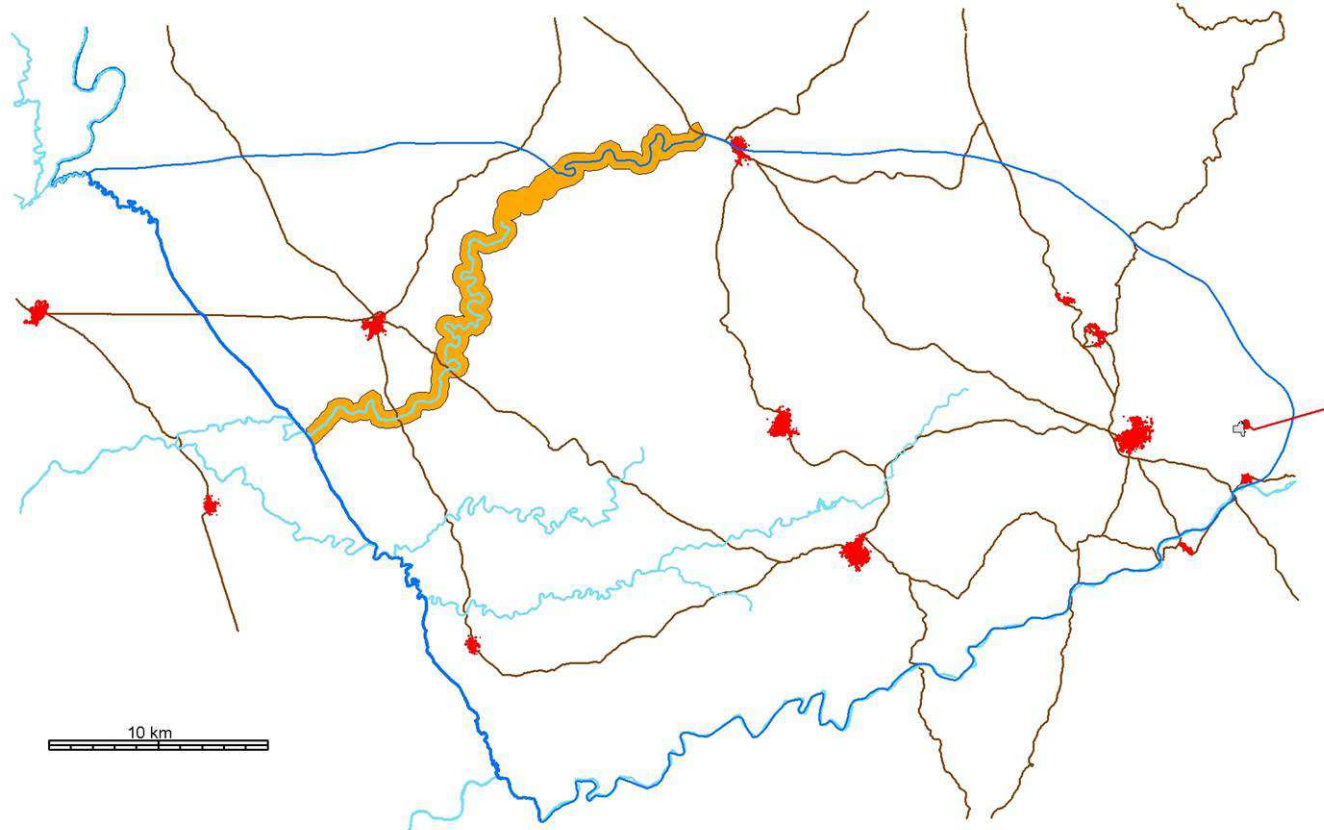


Red Natura 2000 (Dir. 92/43/CEE) Hábitats prioritarios



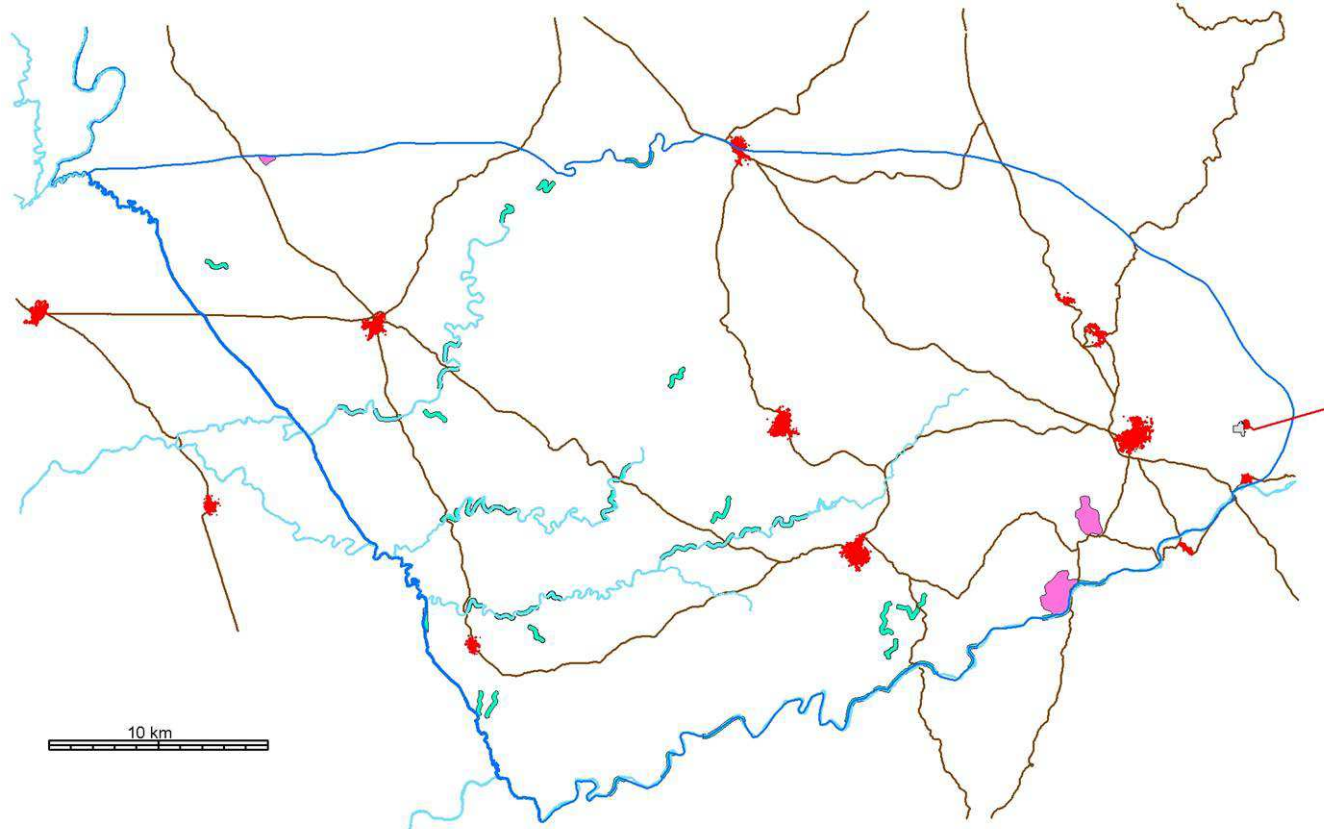


Futuro corredor ecológico y de biodiversidad





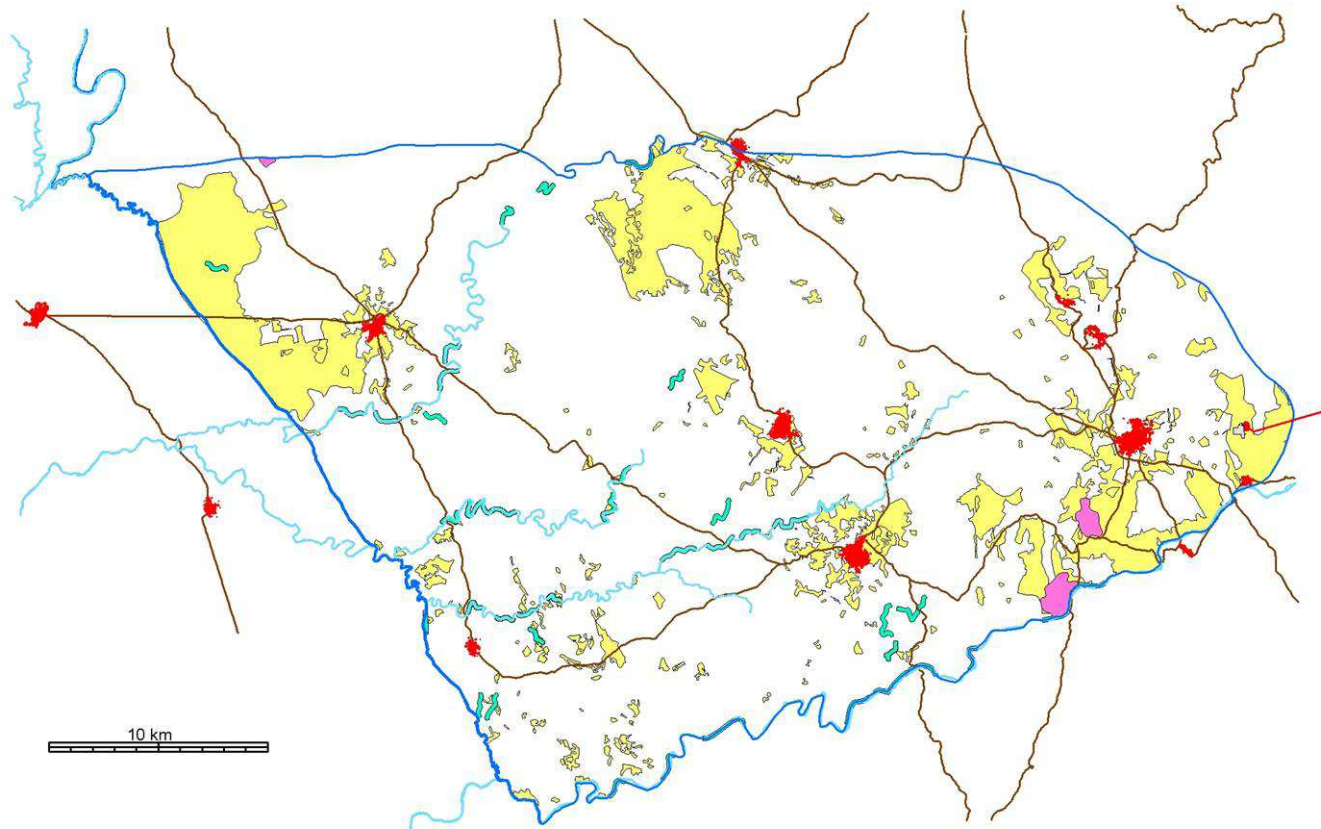
Galerías ribereñas



Línea eléctrica doble circuito a 400 kV Balboa-Alqueva

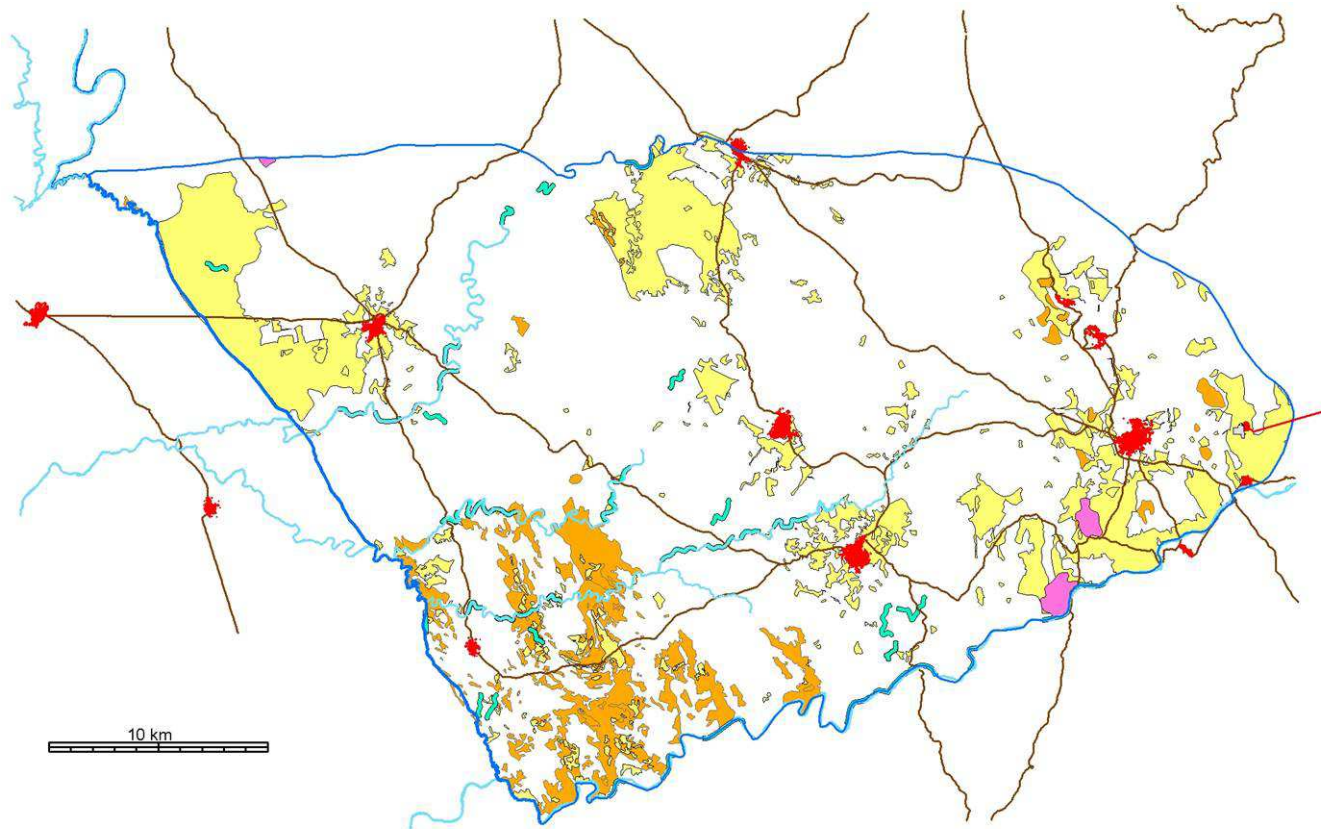


Cultivos



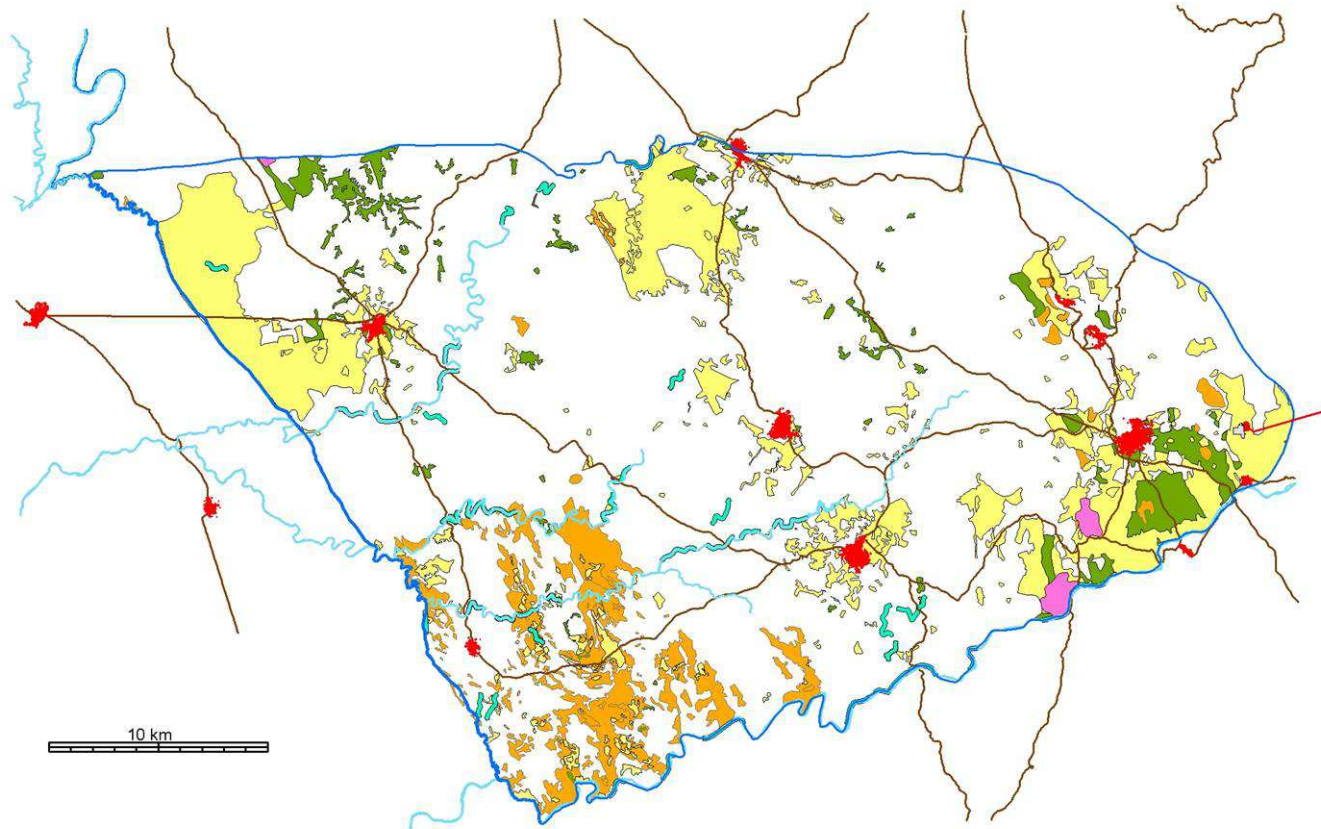


Matorral



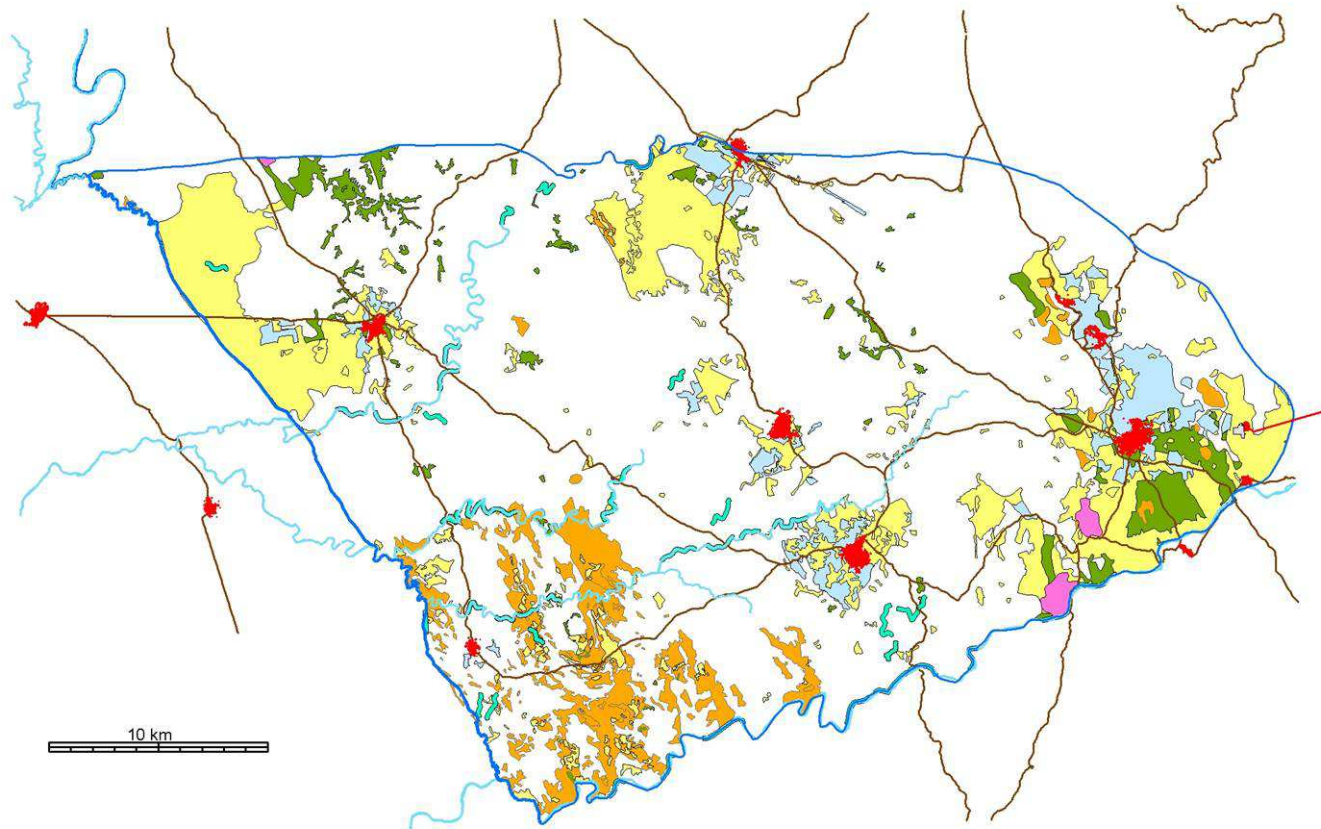


Pastizal



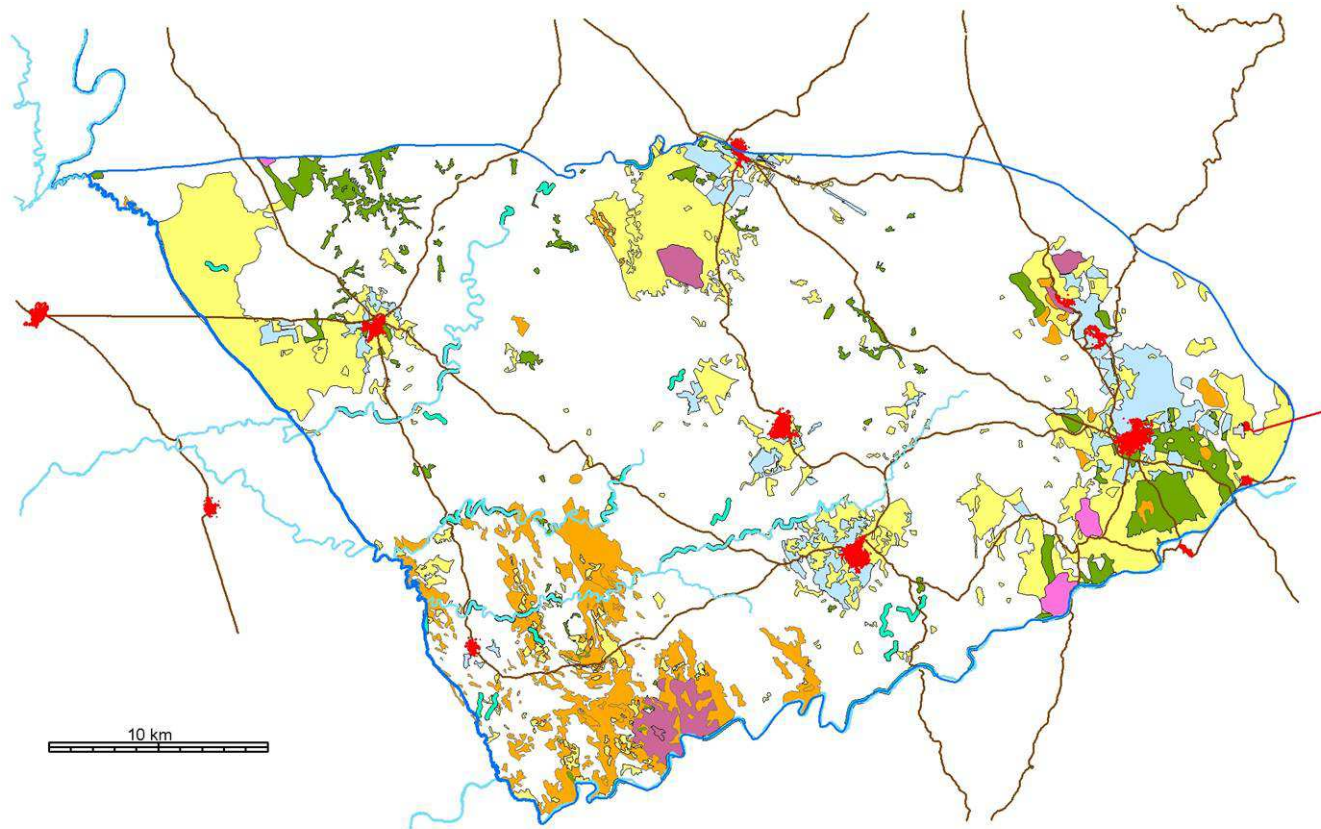


Cultivos arbóreos



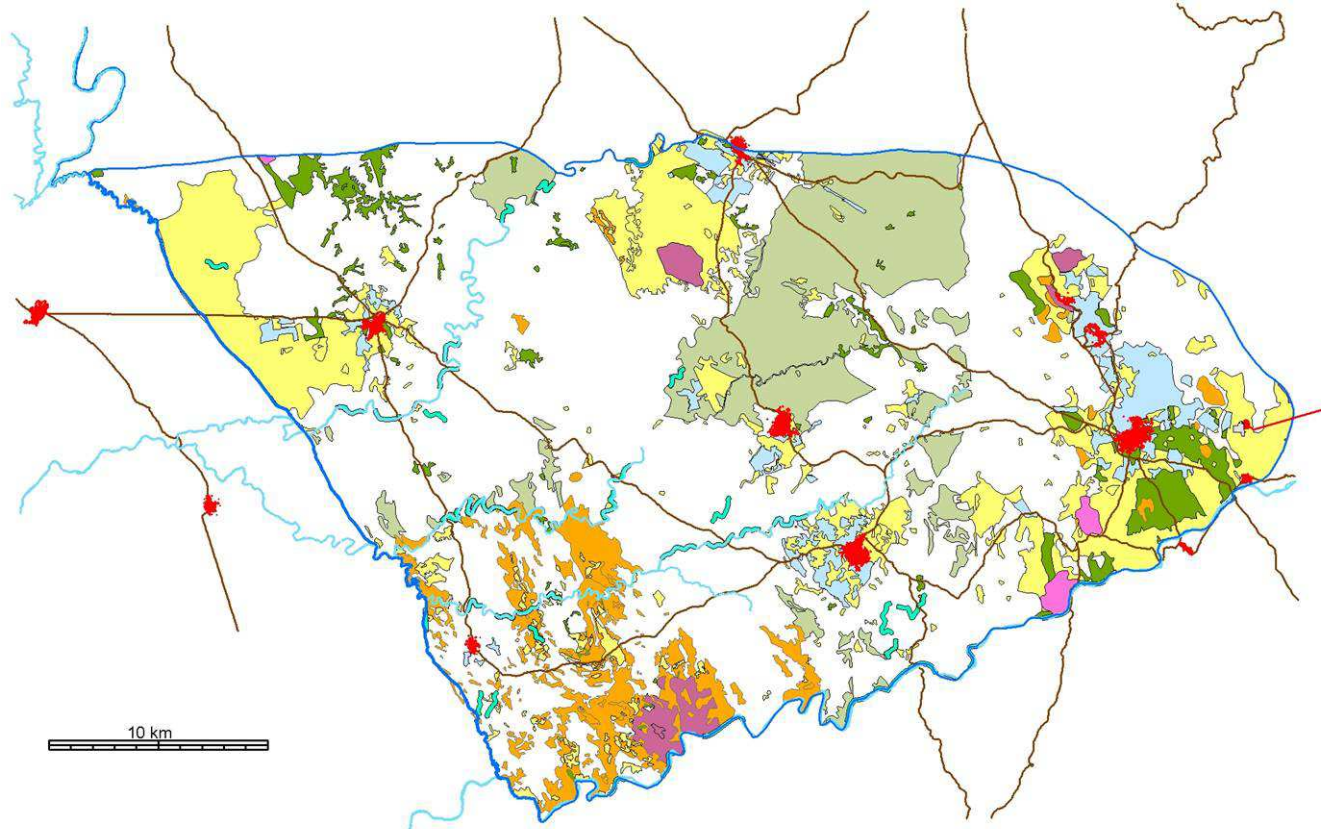


Plantaciones forestales



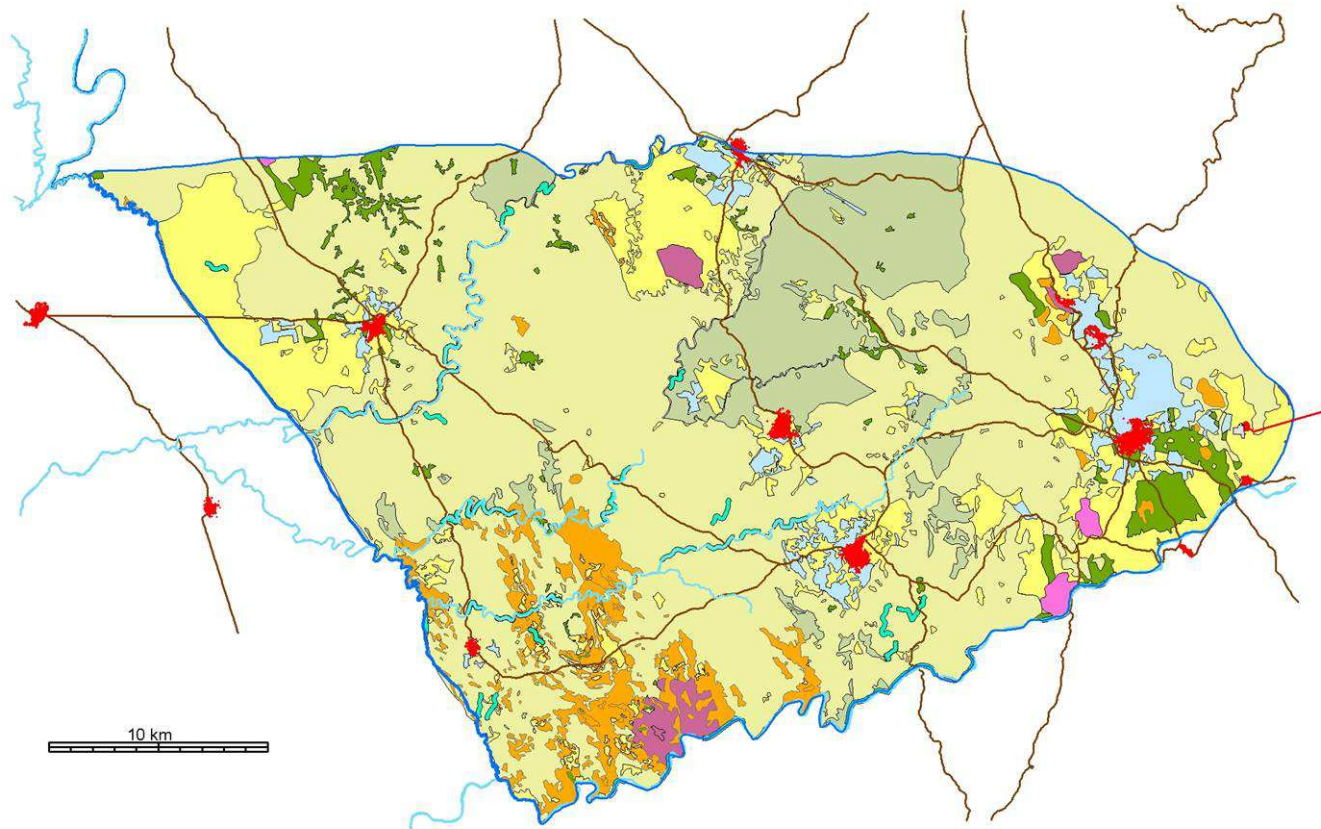


Dehesas alta fracción de cabida cubierta



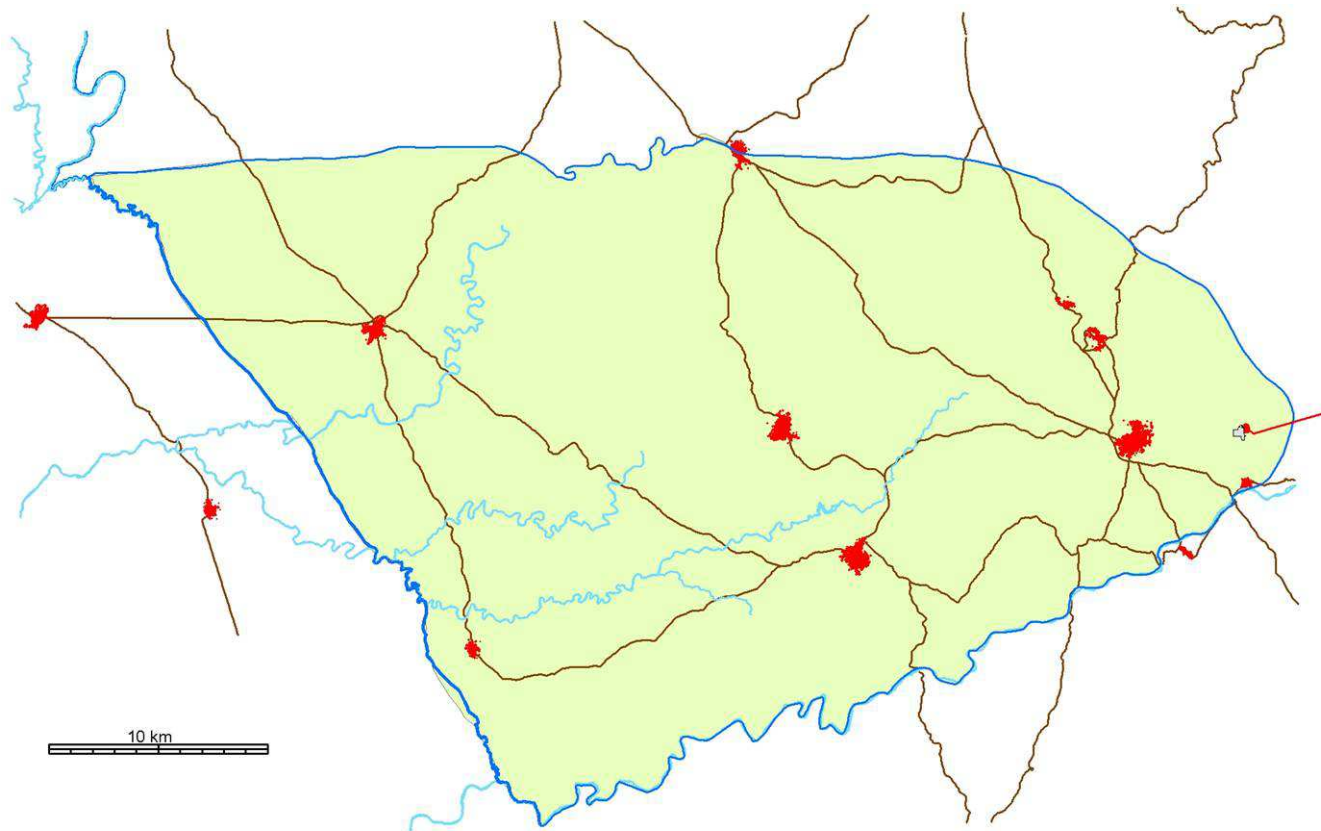


Dehesas baja fracción de cabida cubierta



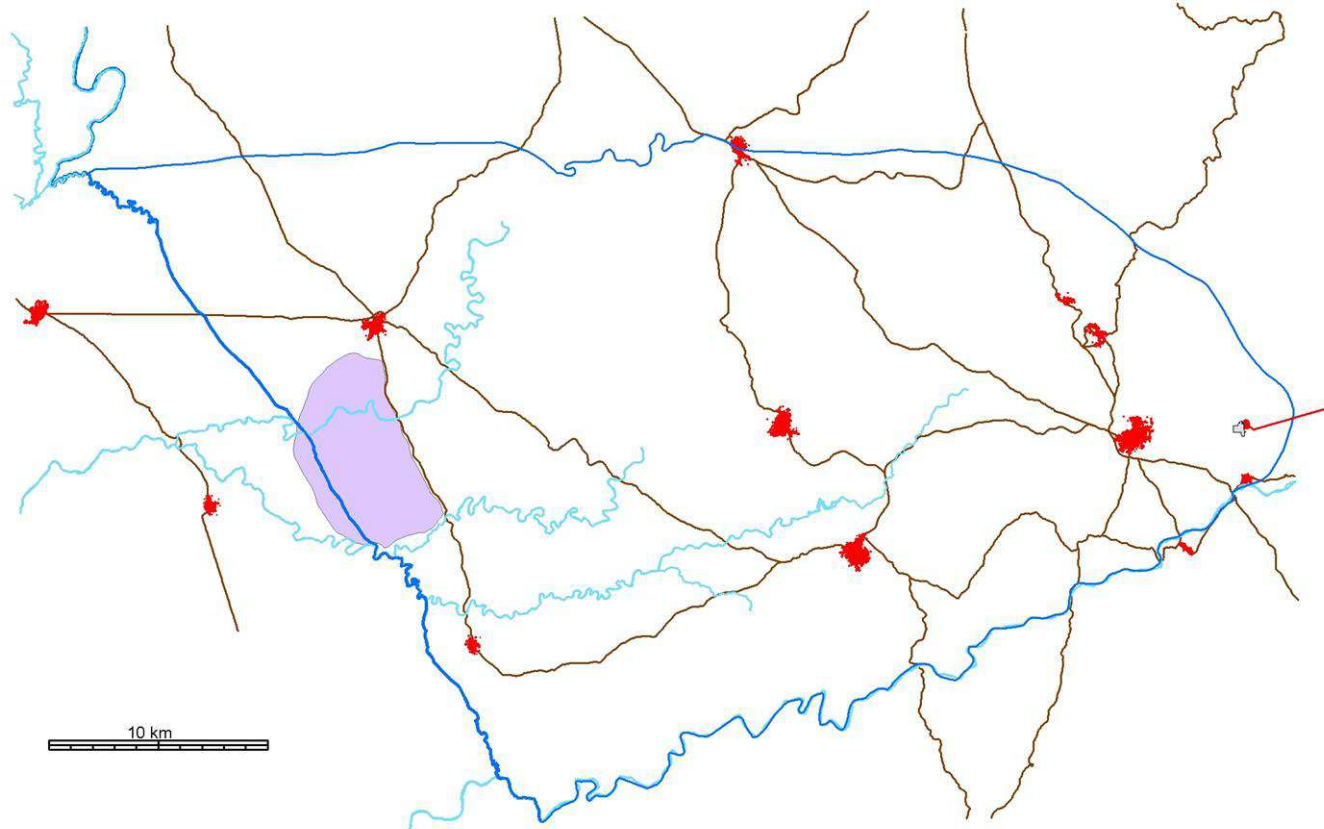


Zonas de importancia para la avifauna S.E.O.



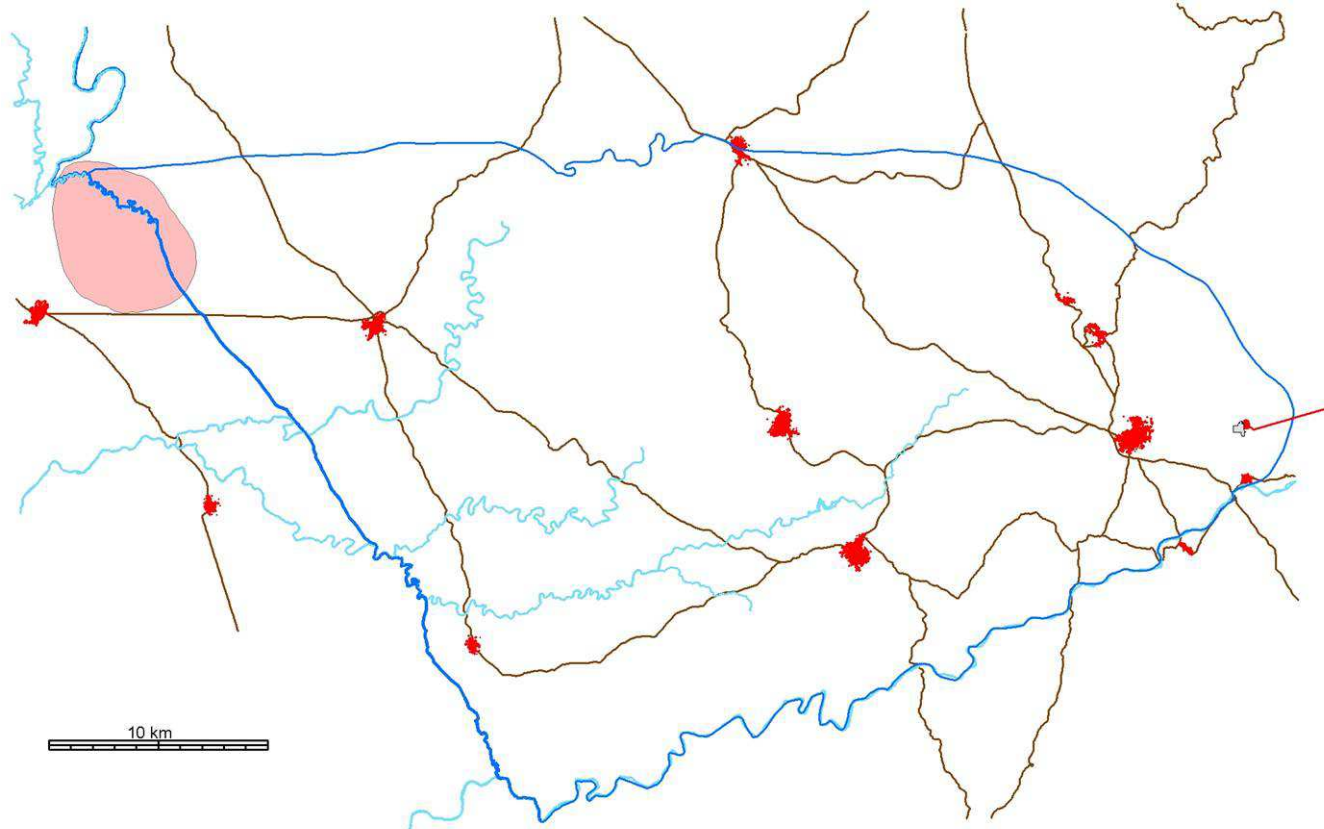


Área dispersión águila imperial



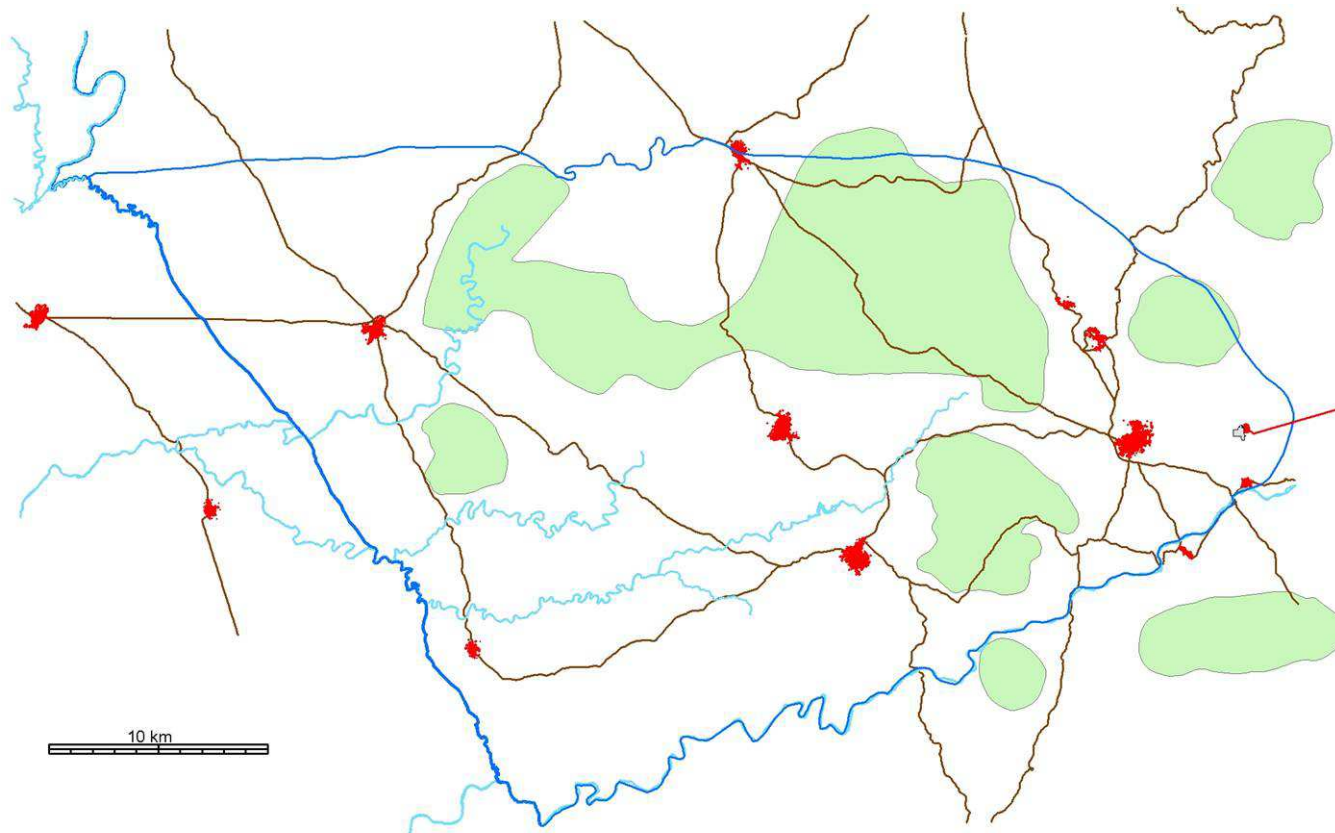


Zona nidificación águila real



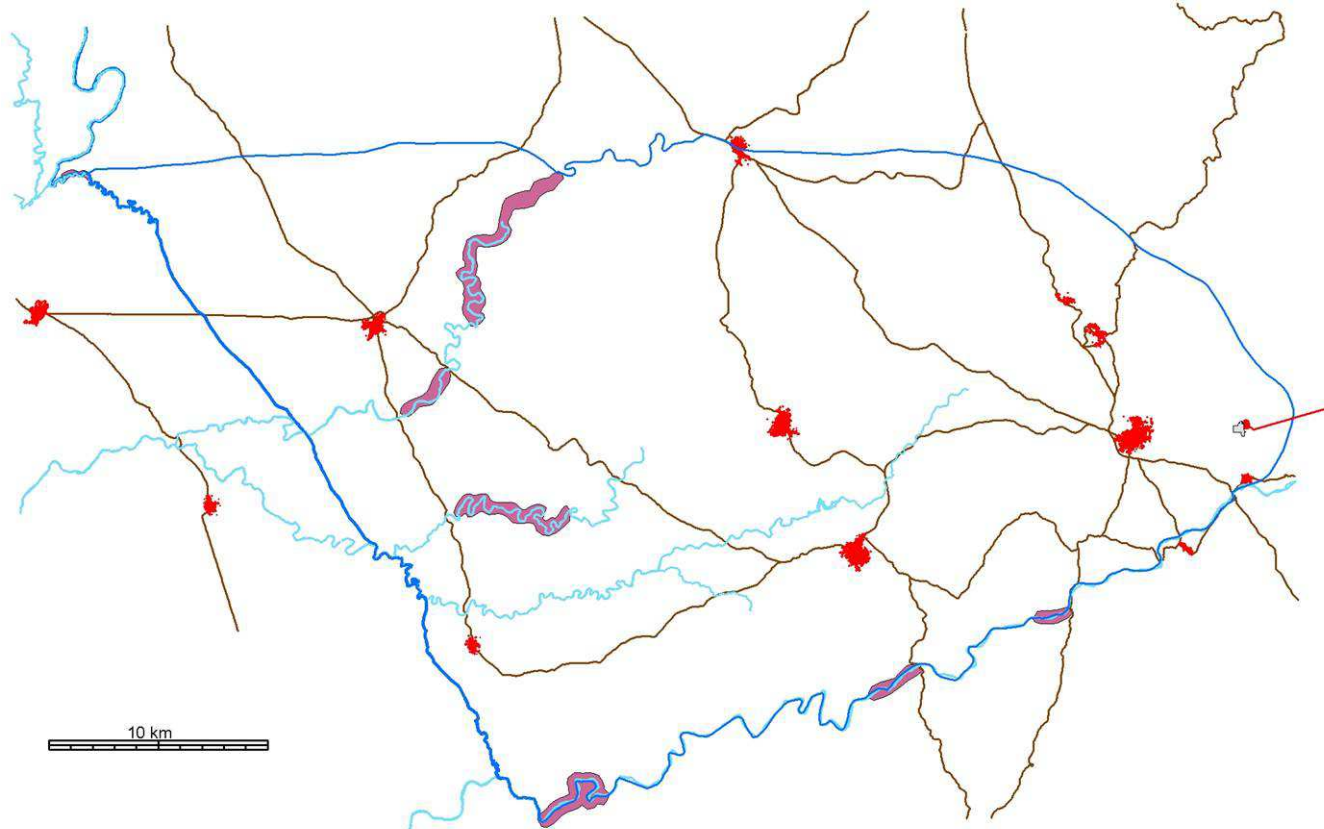


Área distribución cigüeña negra



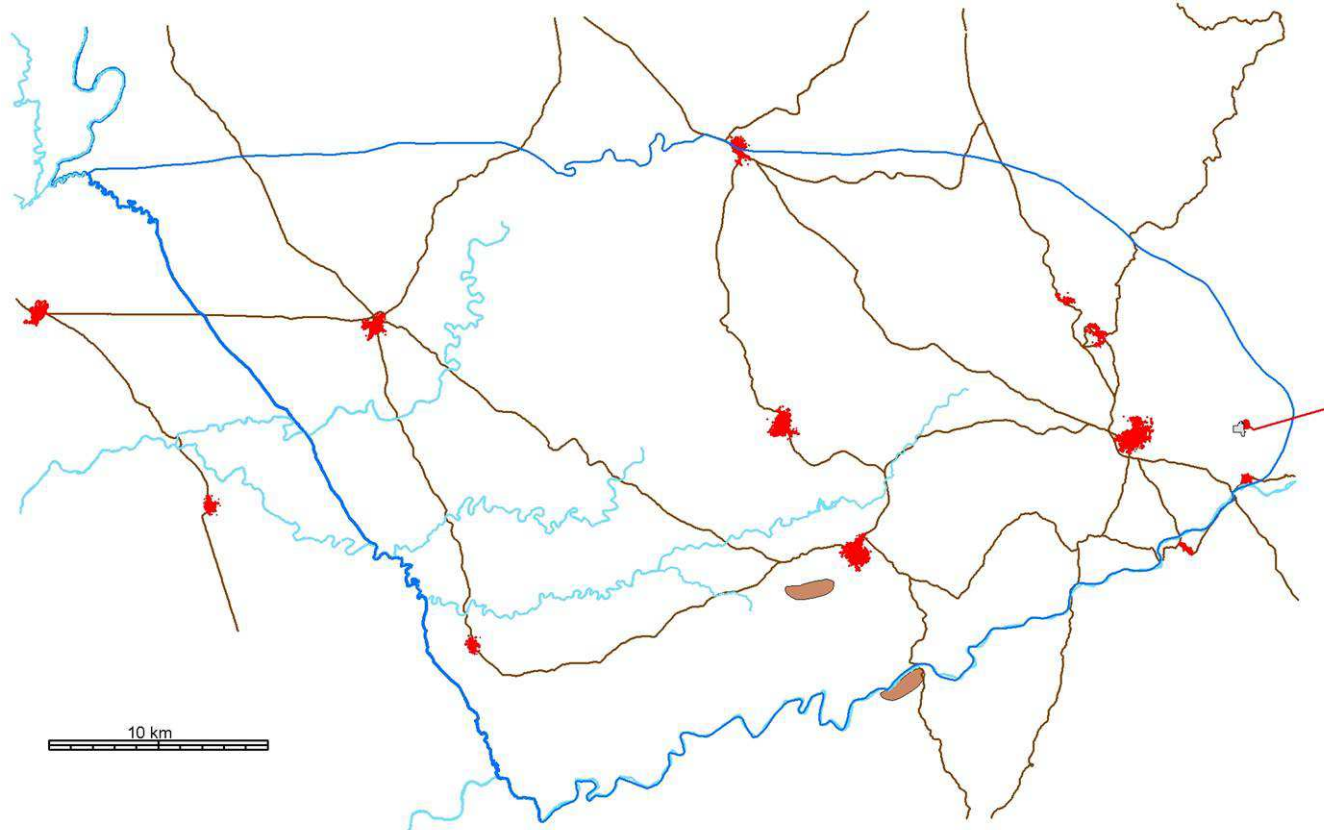


Zonas concentración cigüeña negra



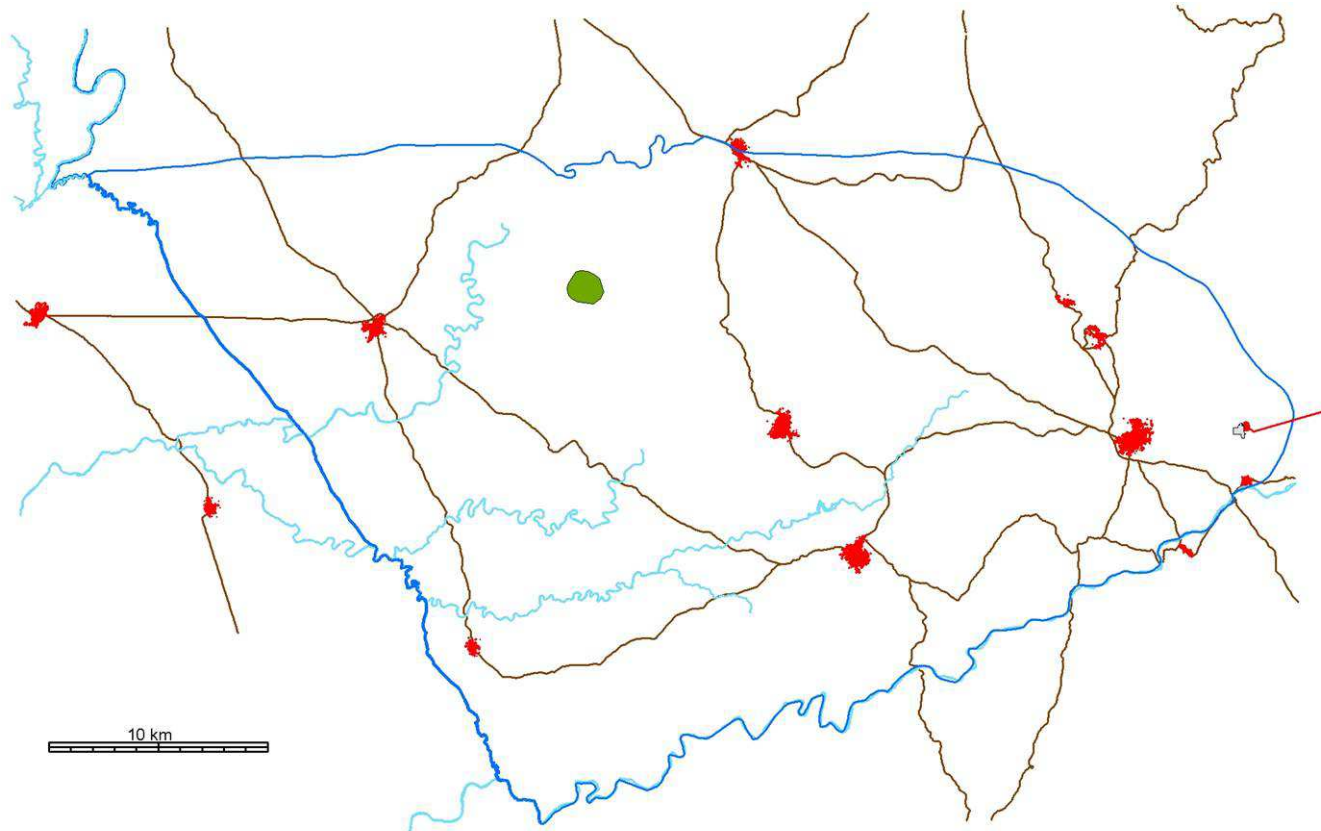


Zona nidificación búho real



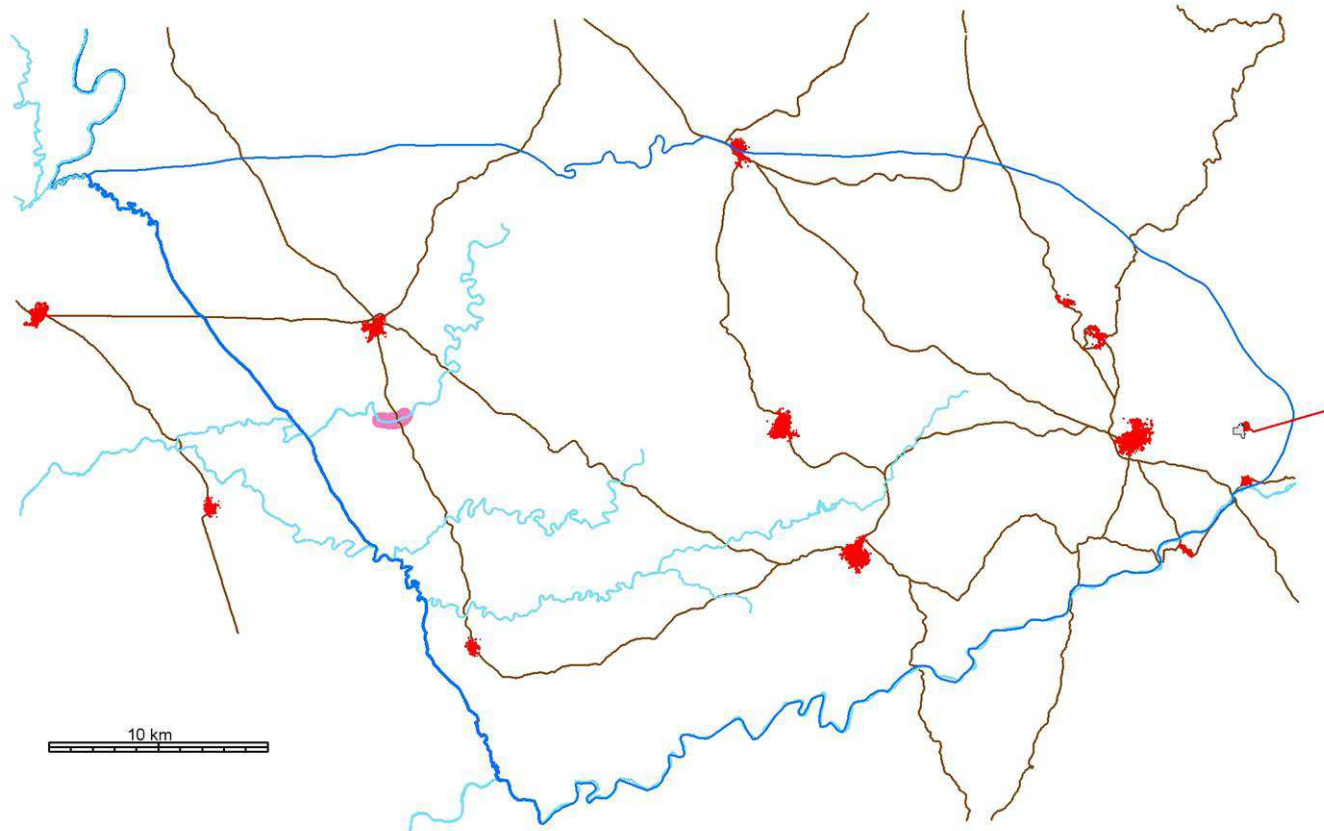


Antigua zona nidificación alimoche



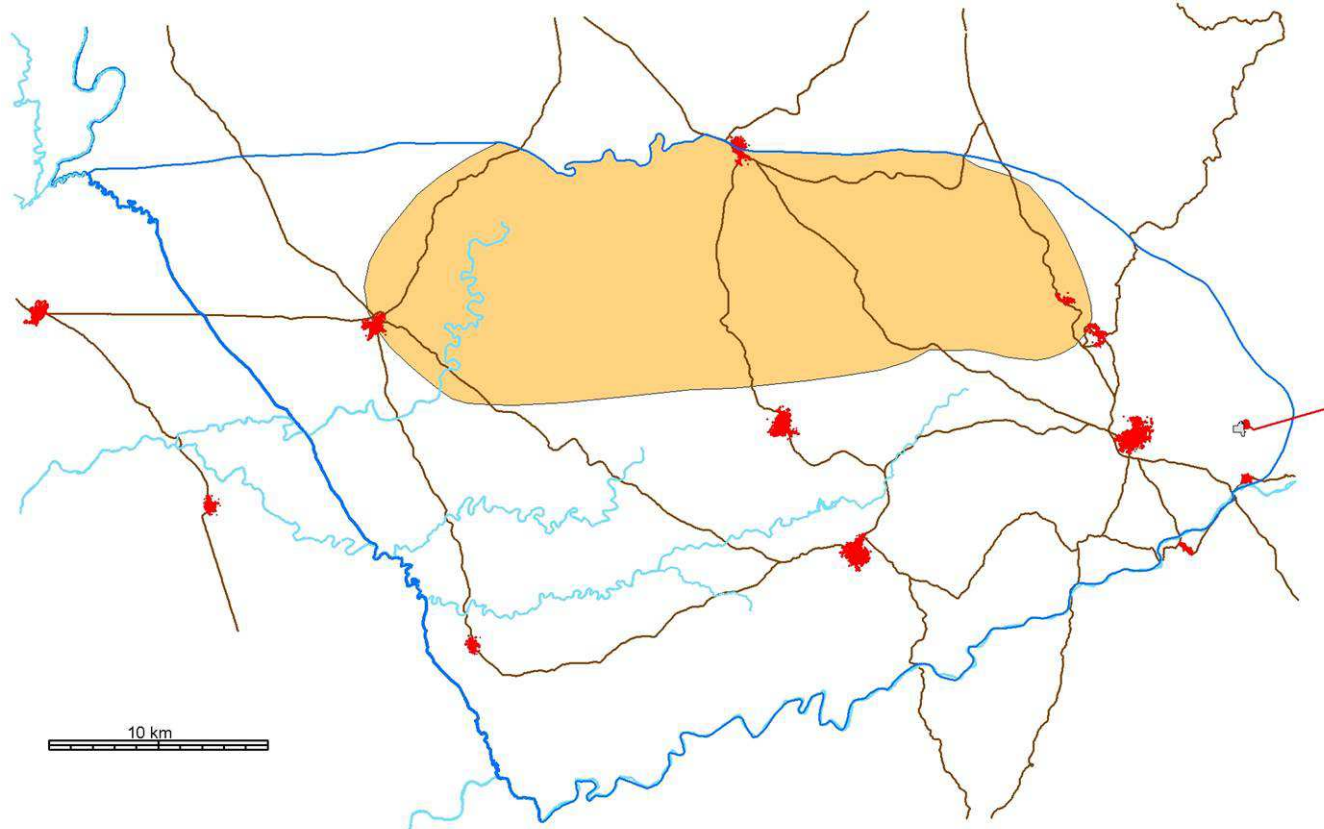


Dormidero milano real



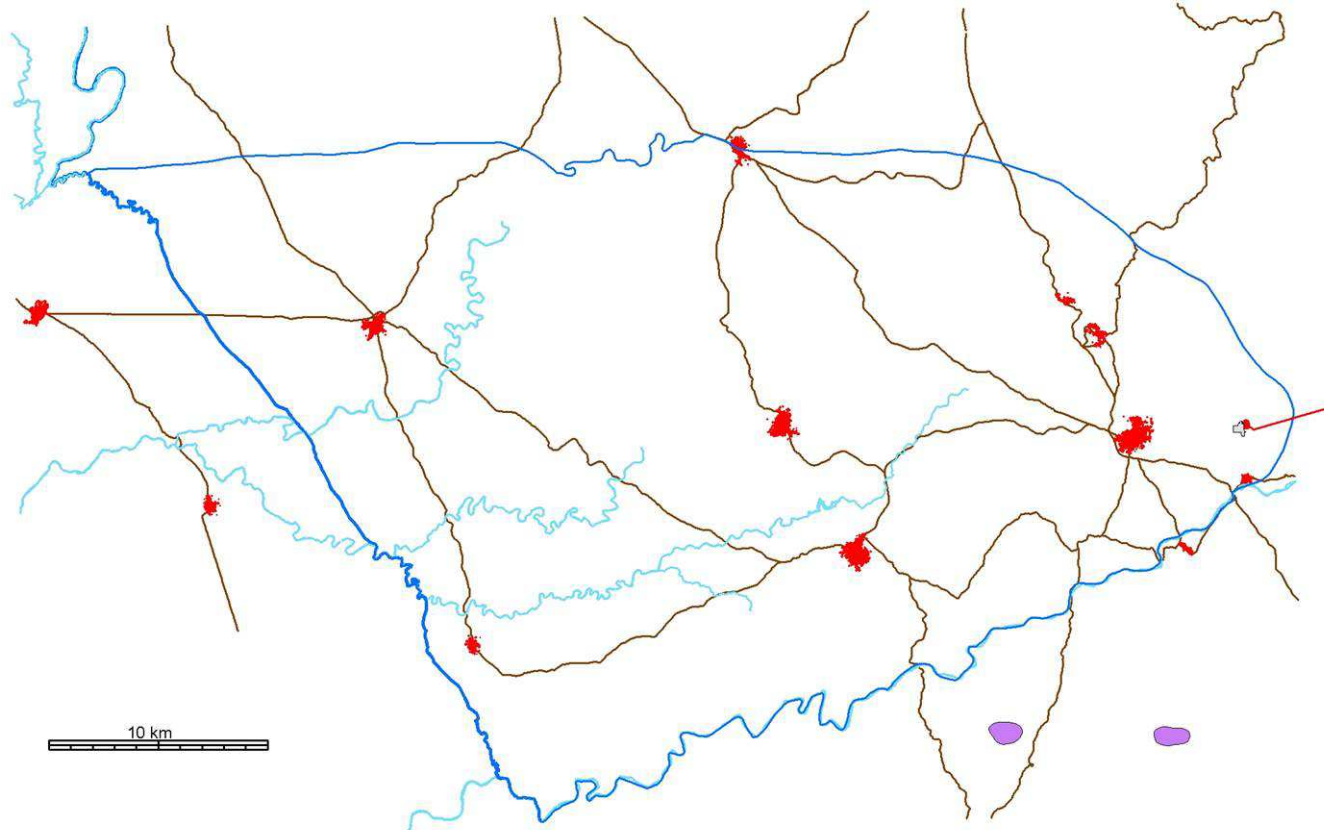


Zona alta densidad de rapaces



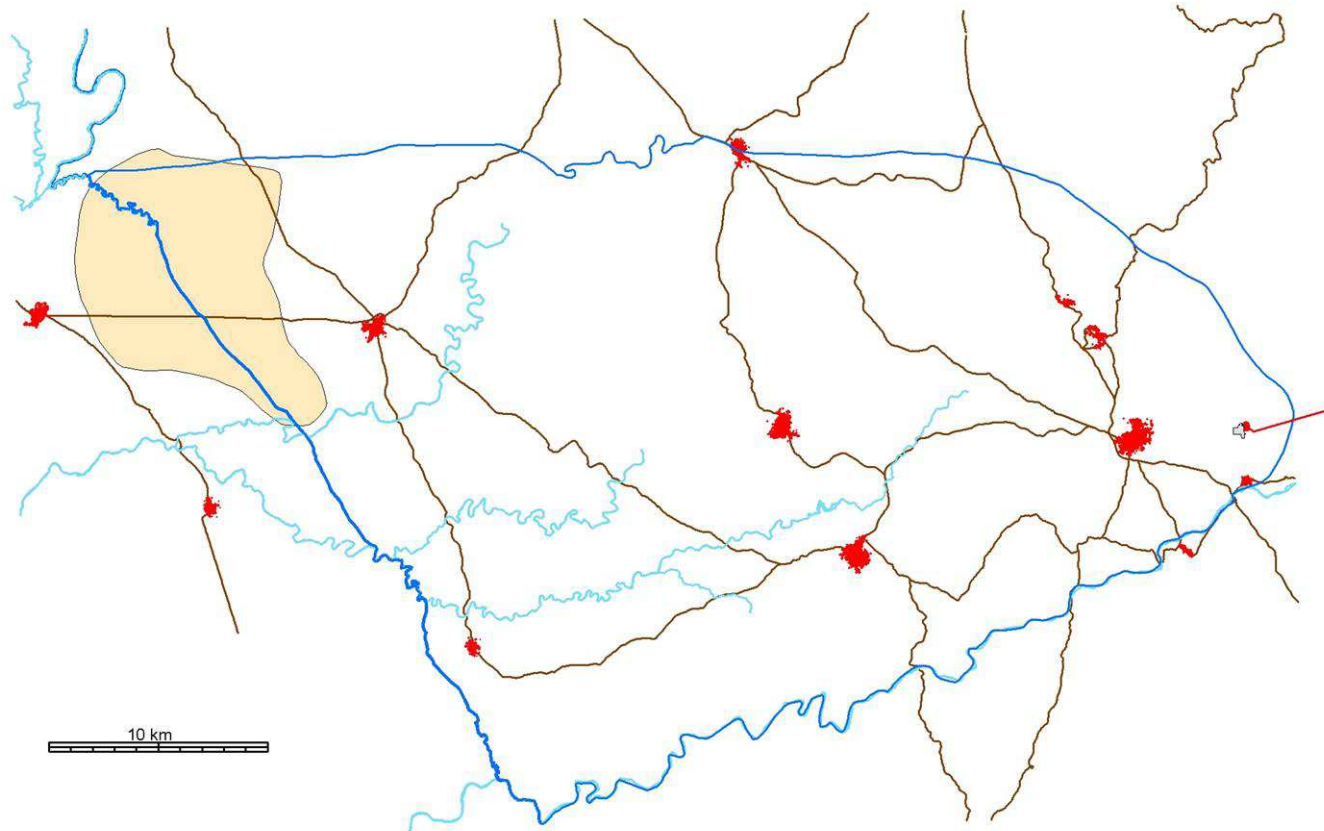


Posaderos buitre leonado



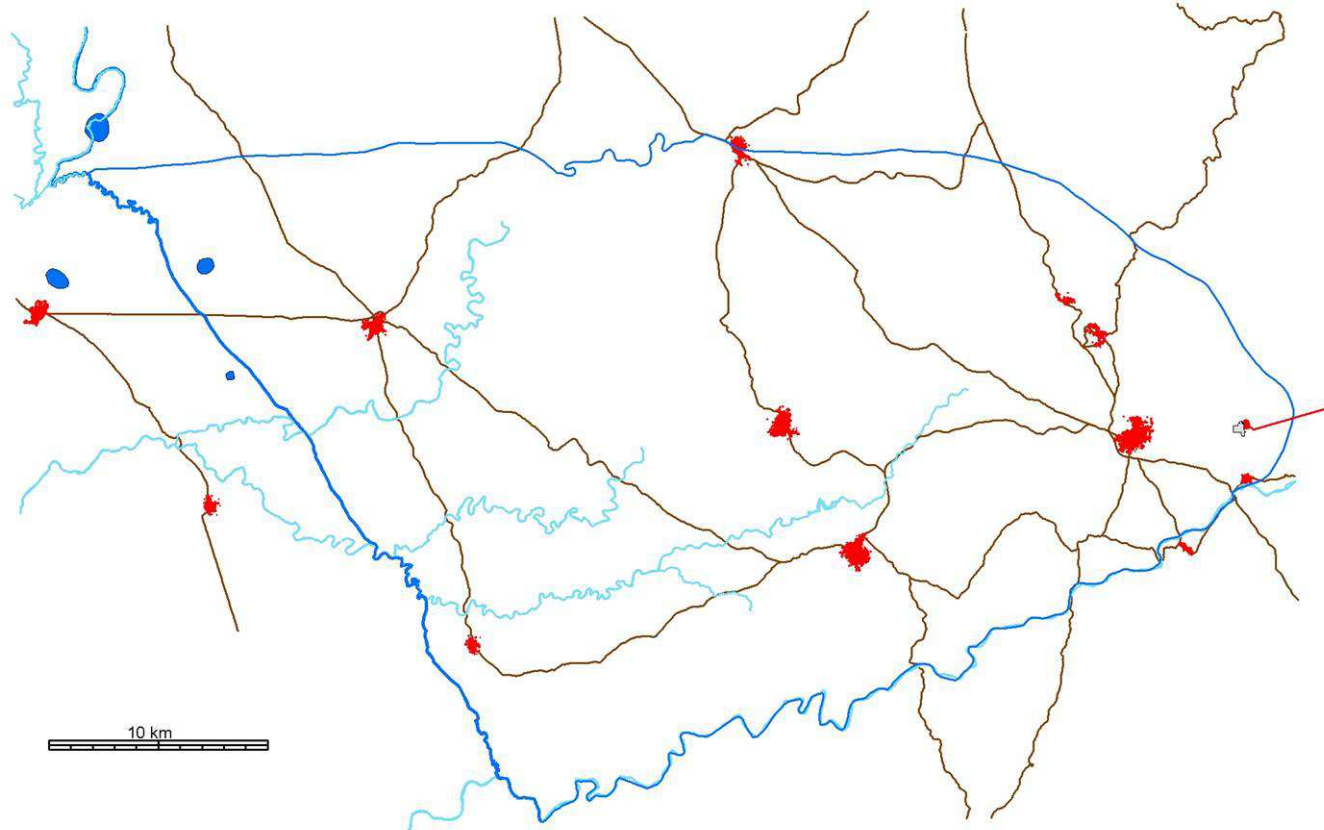


Área distribución avutada



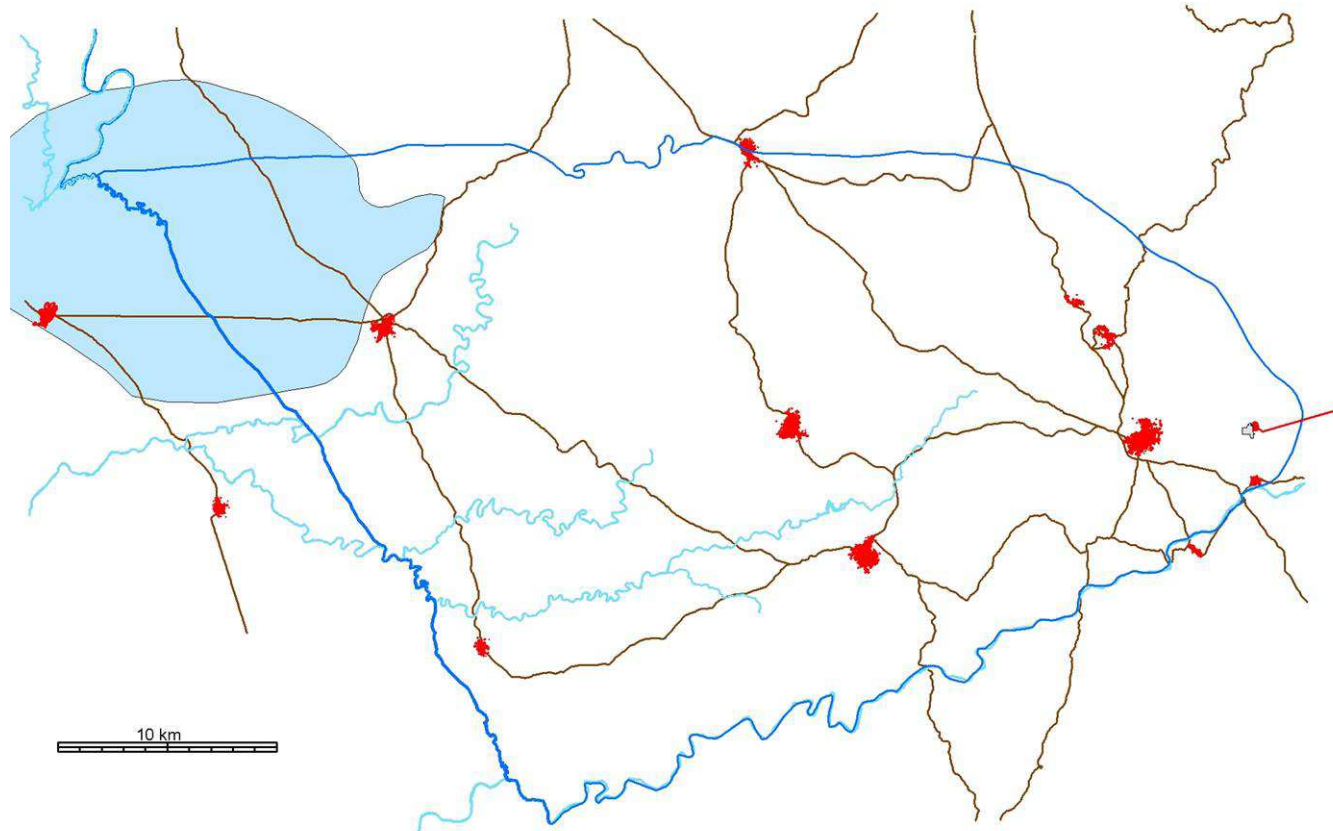


Dormideros de grulla



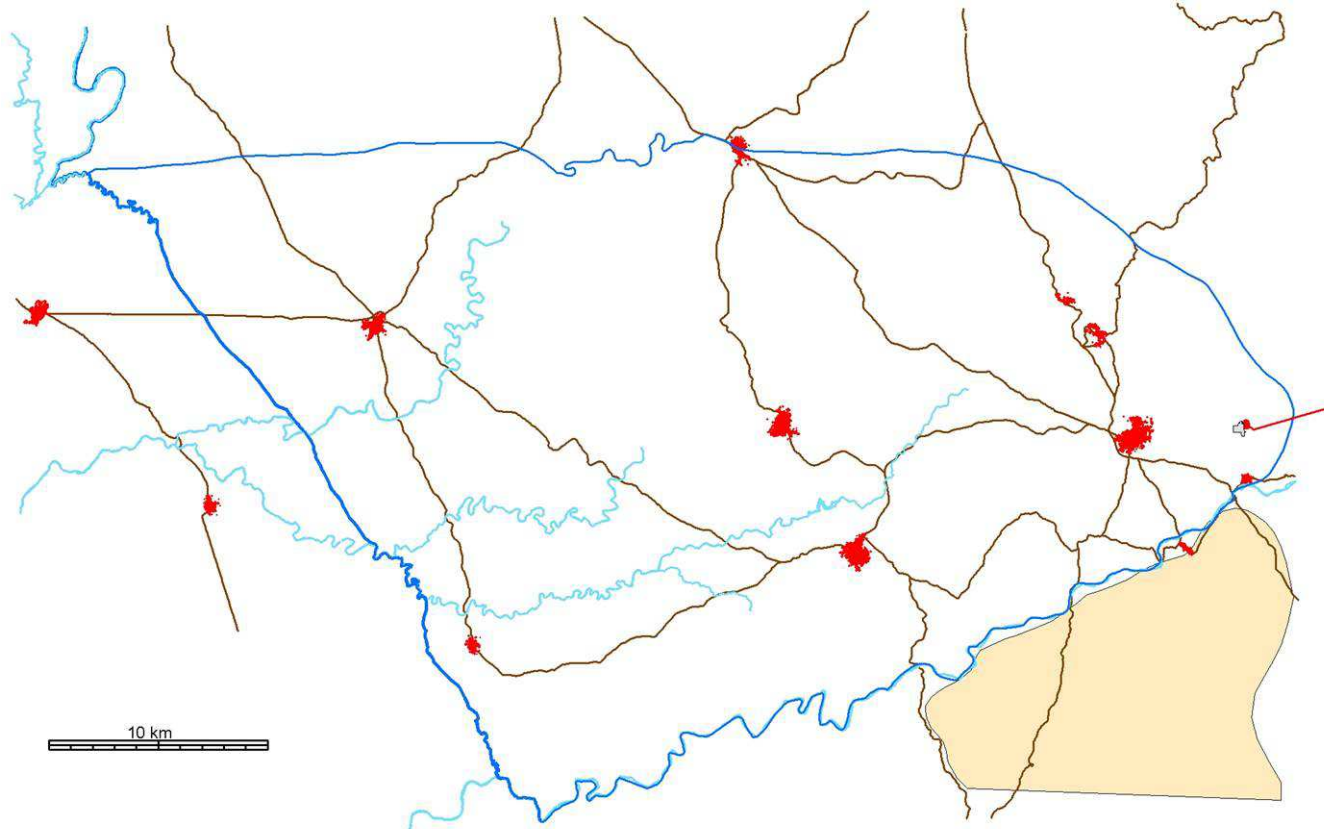


Área campeo grulla



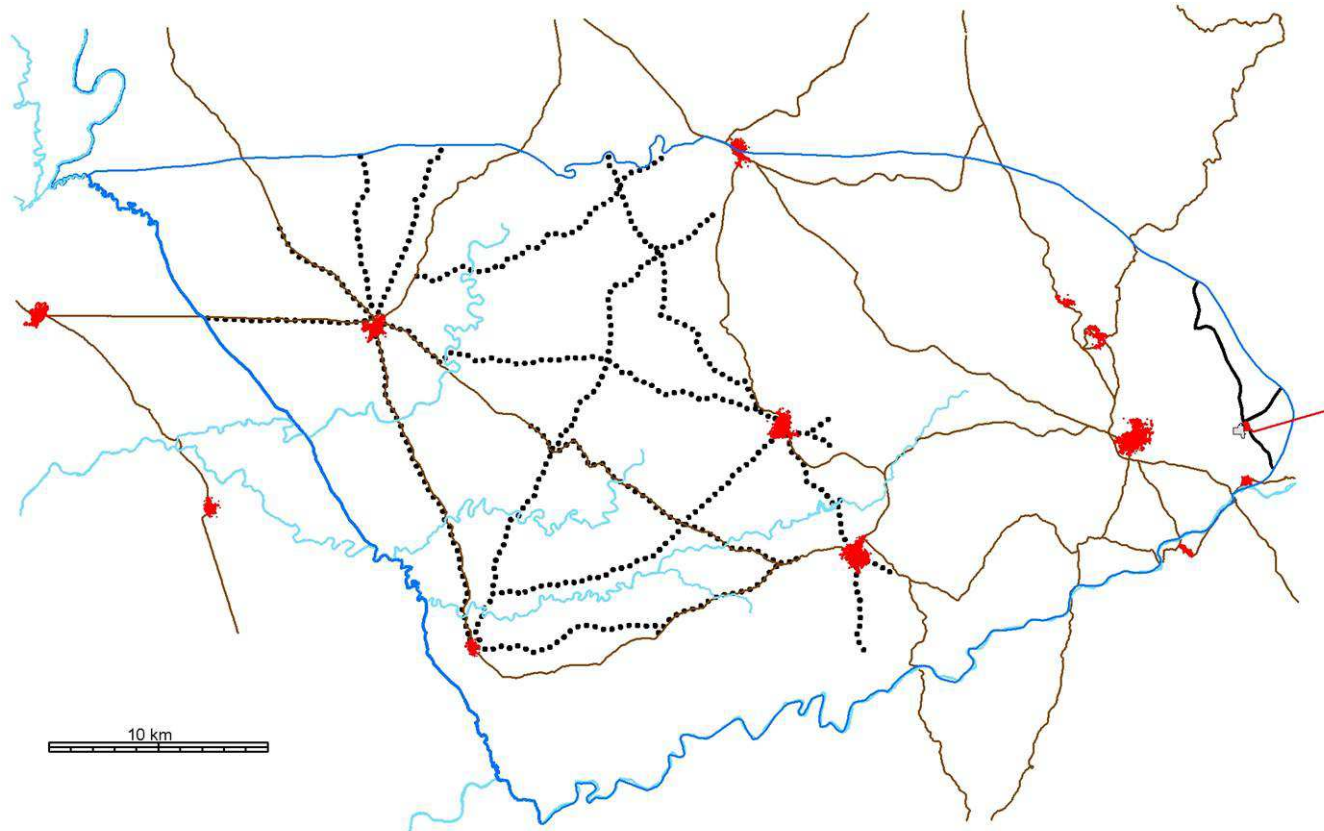


Posible presencia de linces



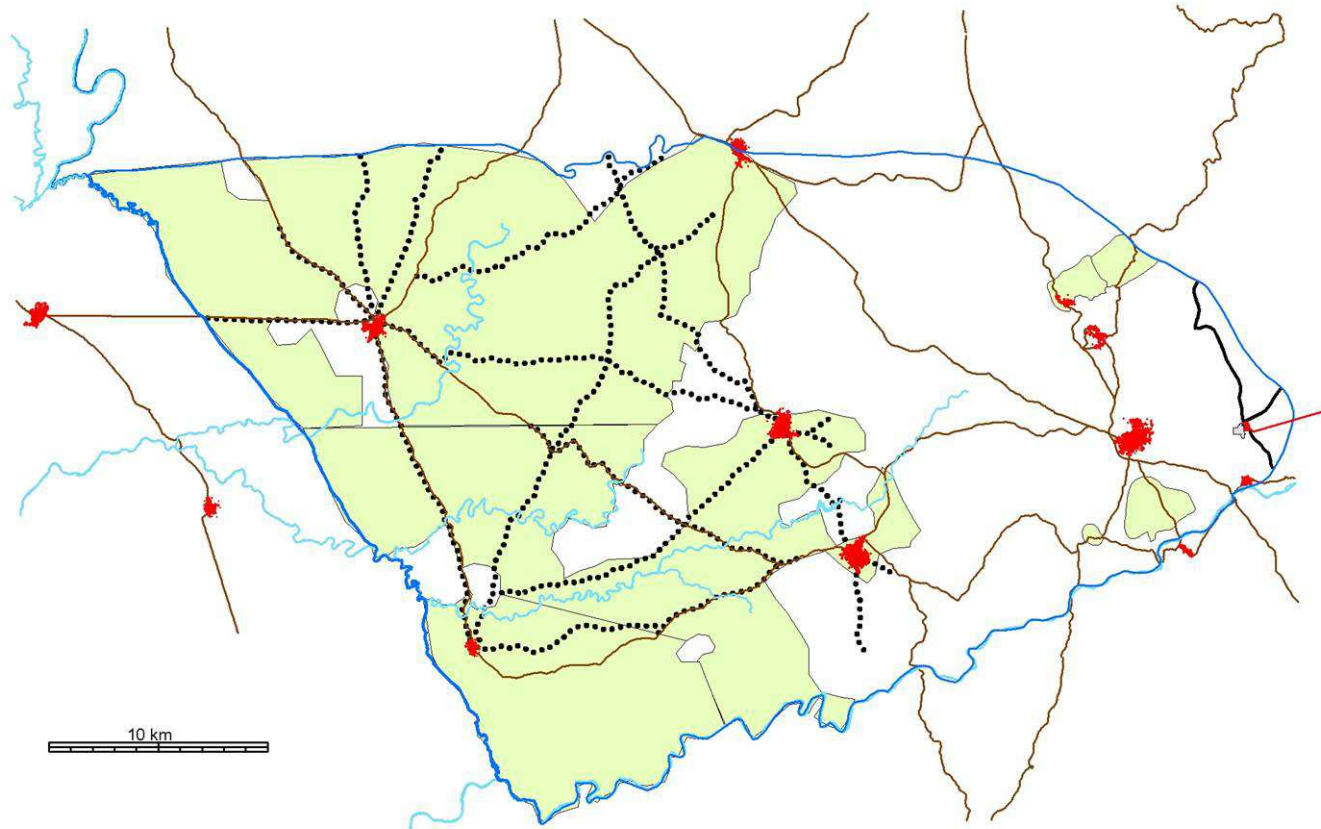


Vías pecuarias



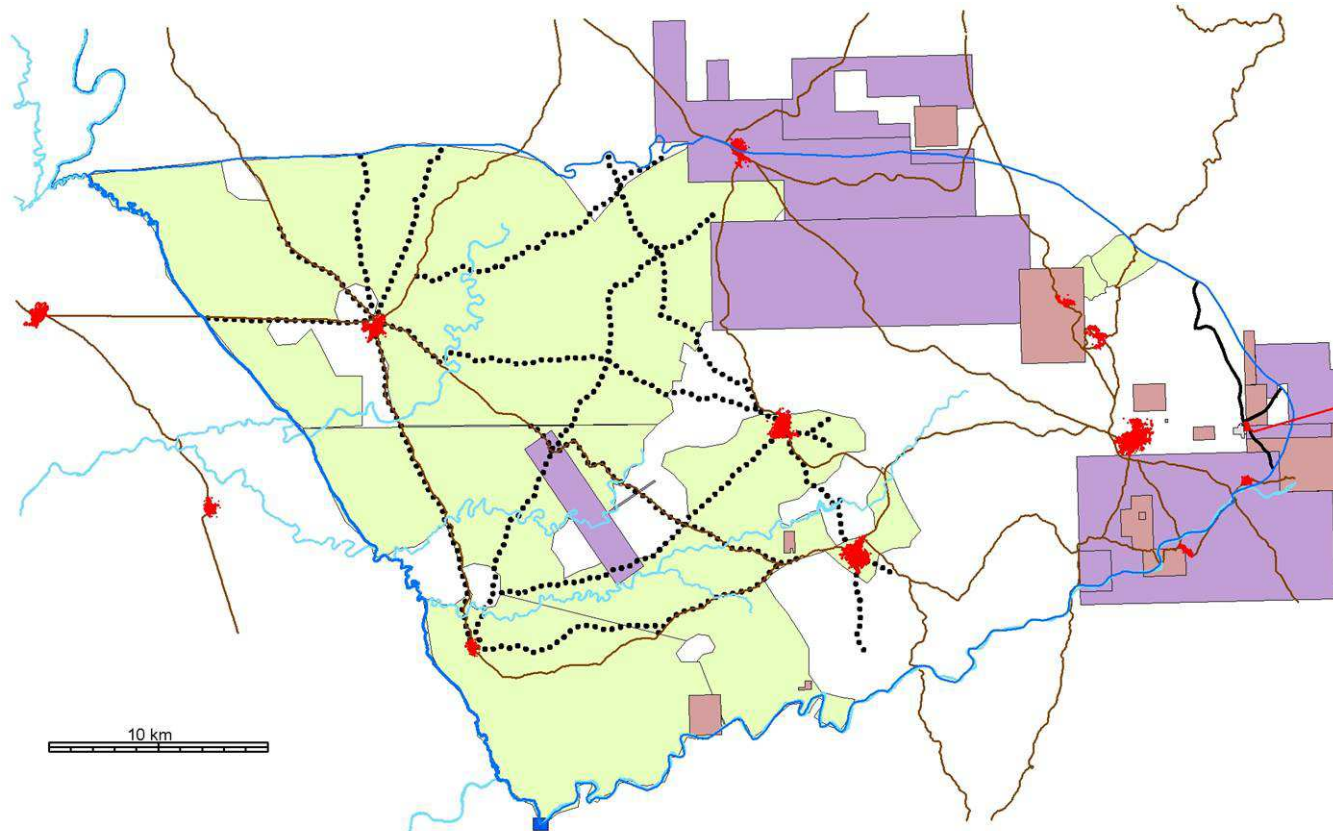


Montes comunales





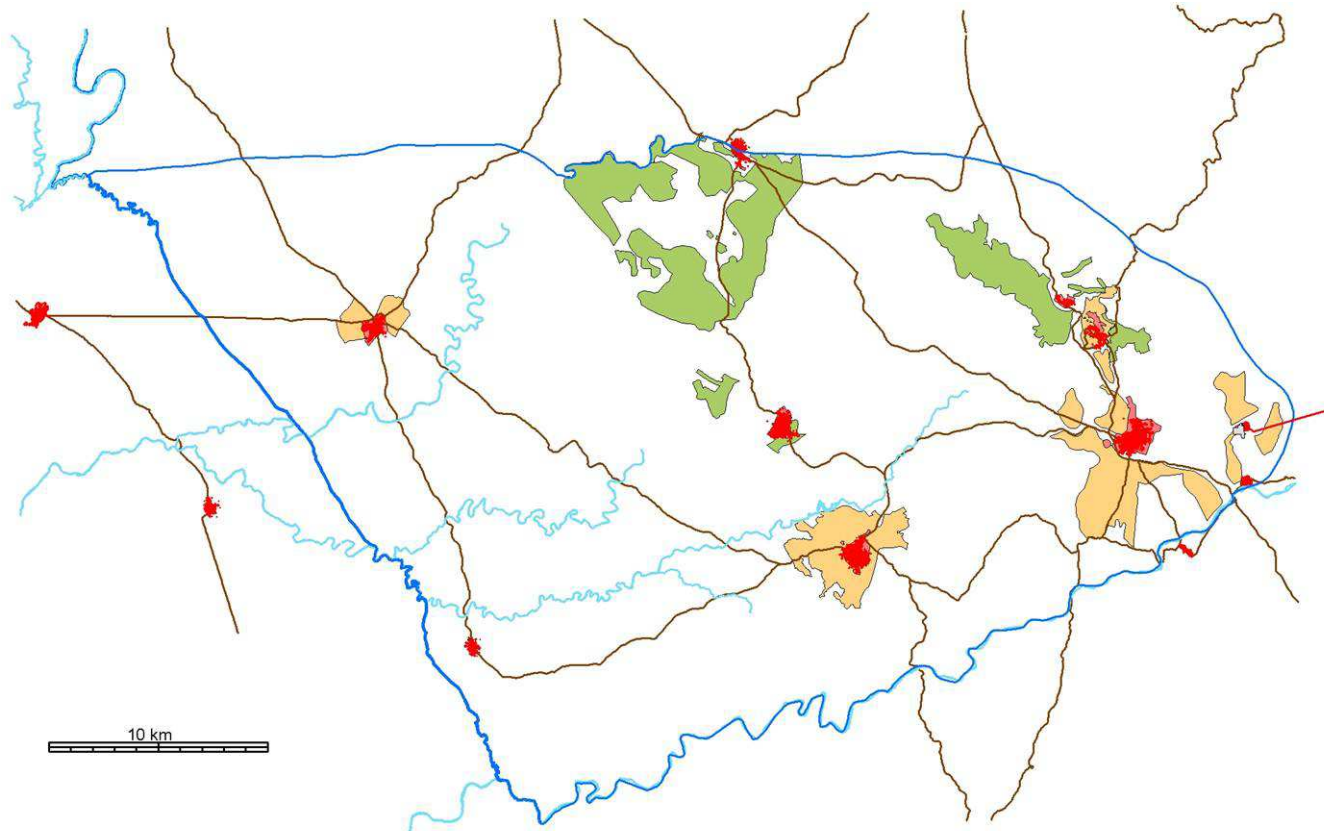
Minería



Línea eléctrica doble circuito a 400 kV Balboa-Alqueva

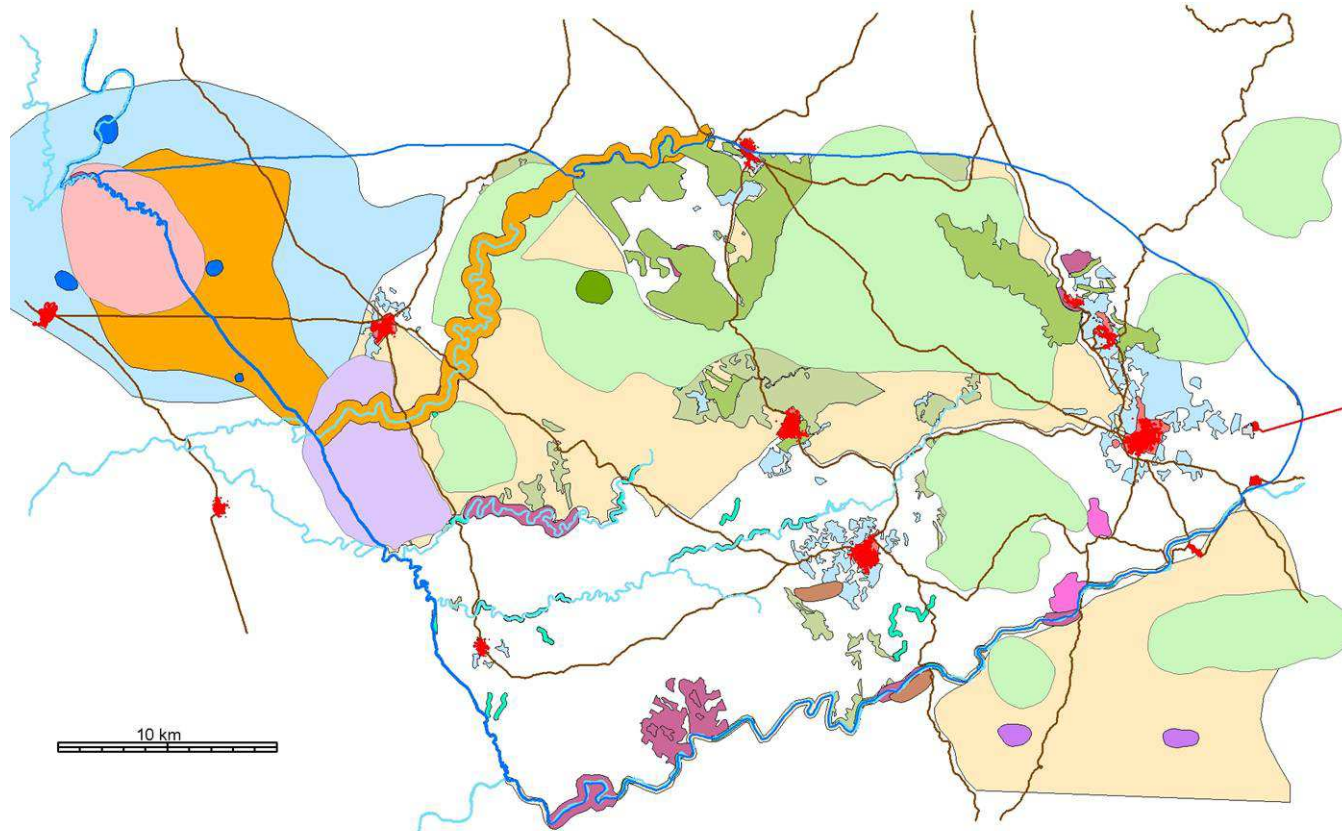


Urbanismo



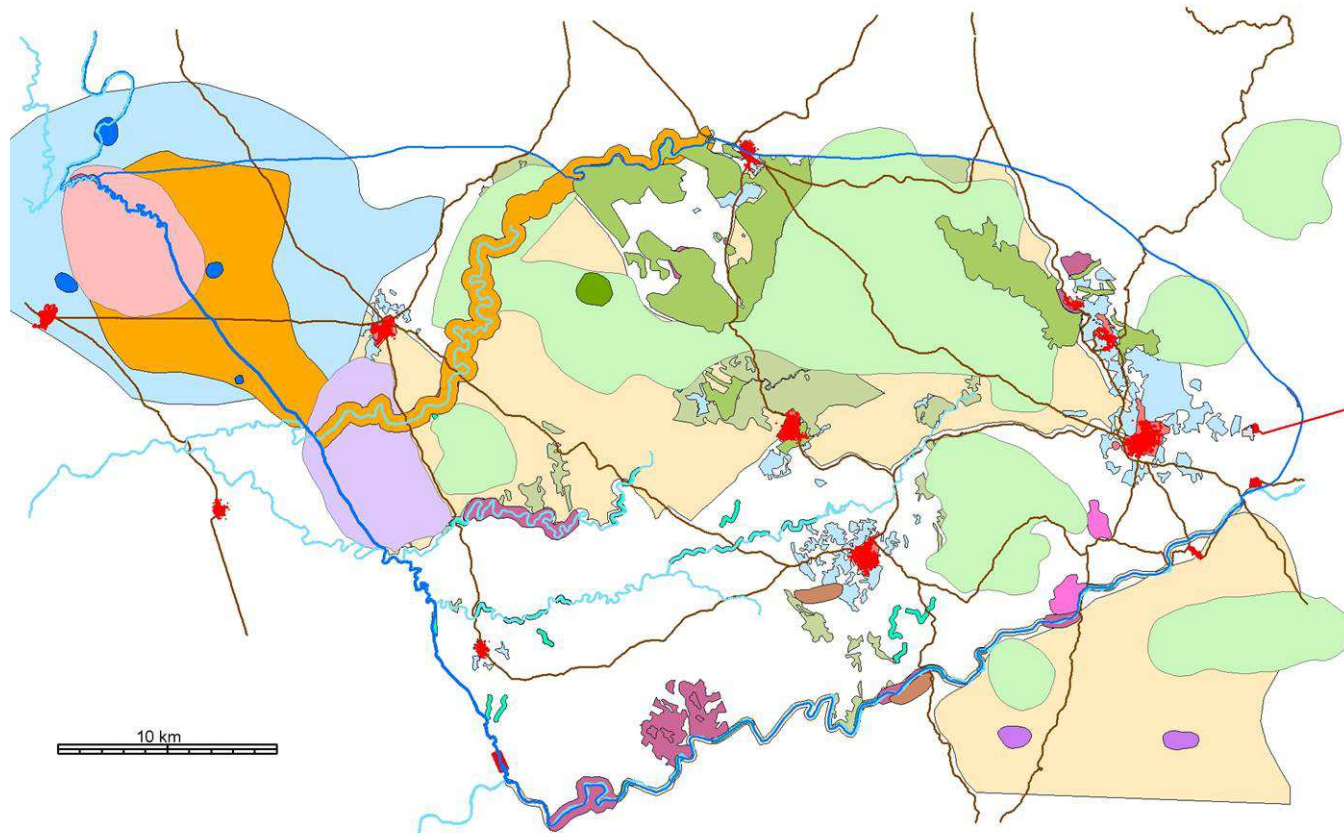


Síntesis ambiental



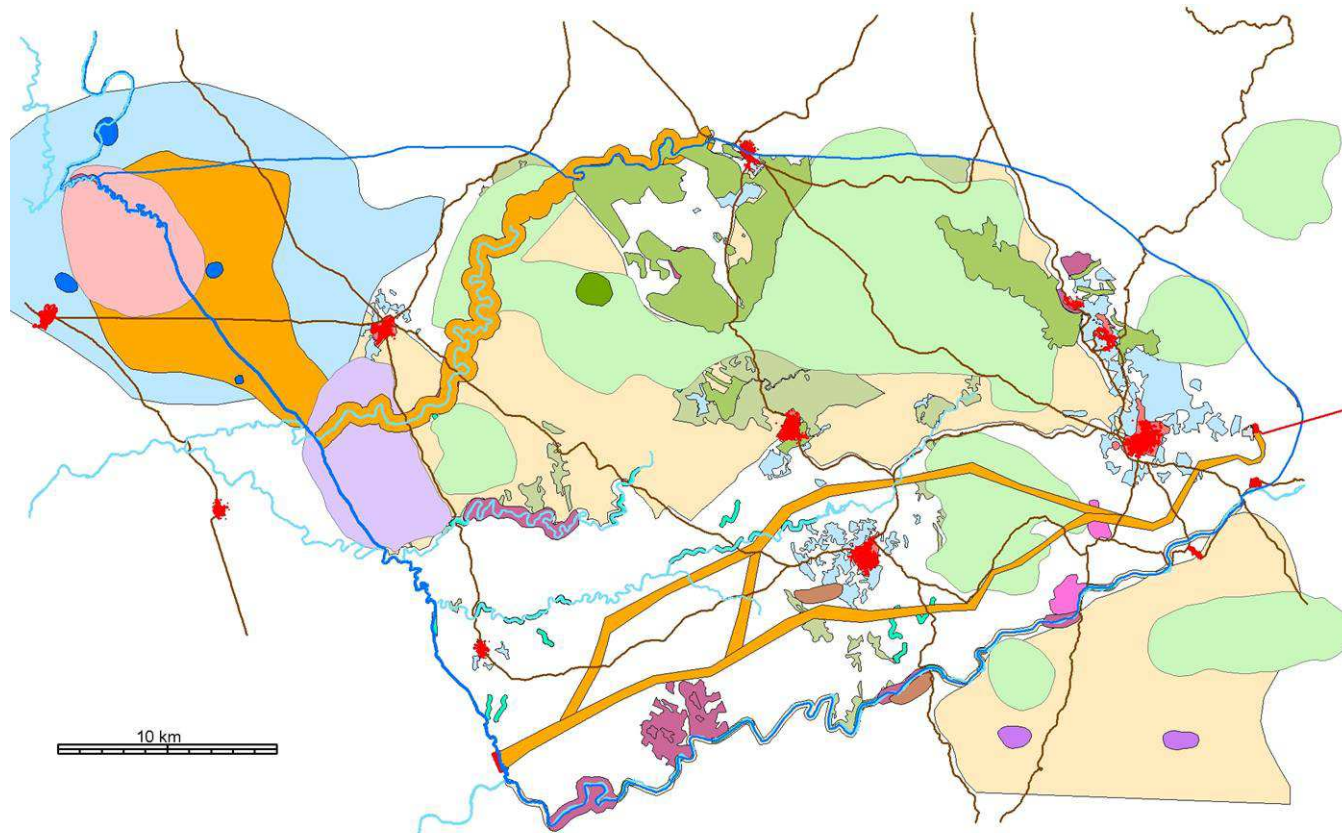


Zona de conexión en frontera



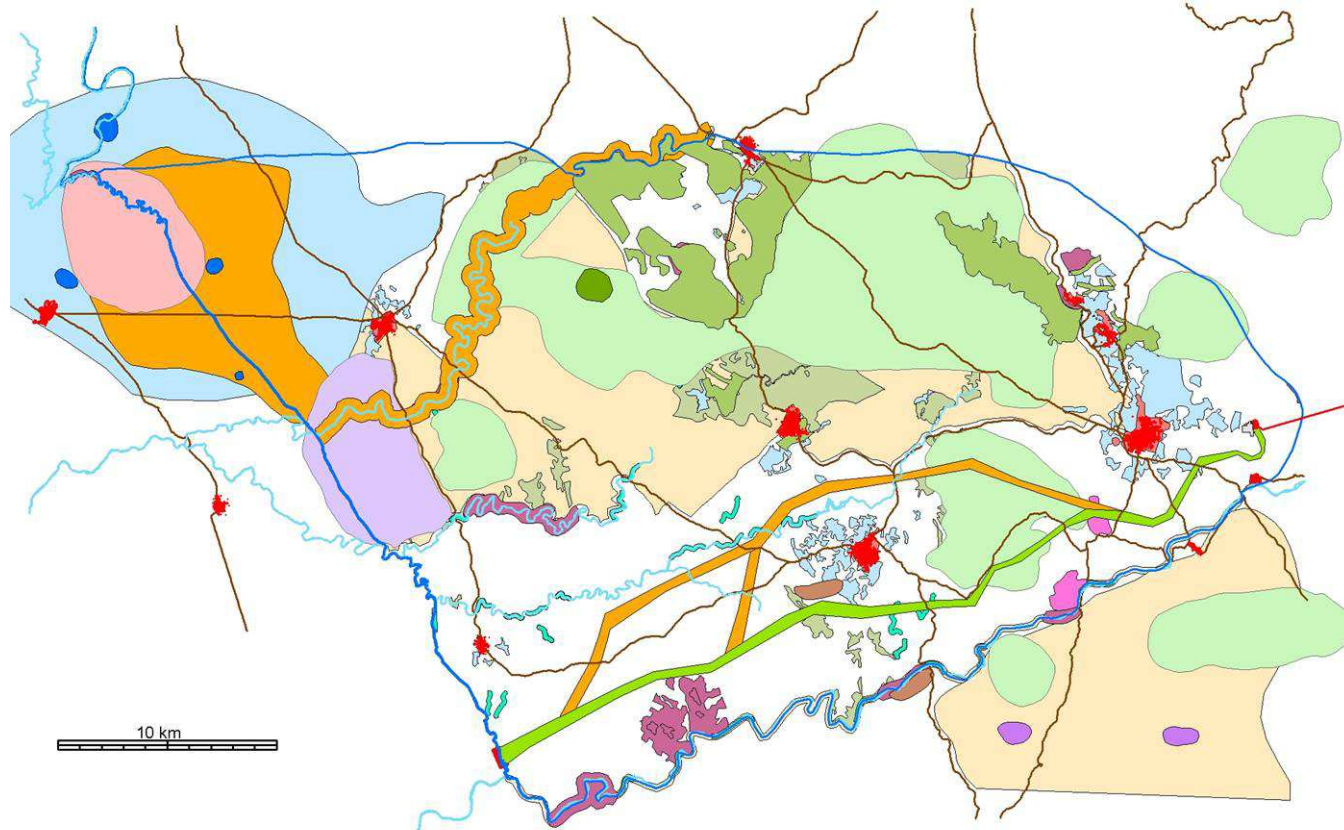


Alternativas sobre síntesis ambiental



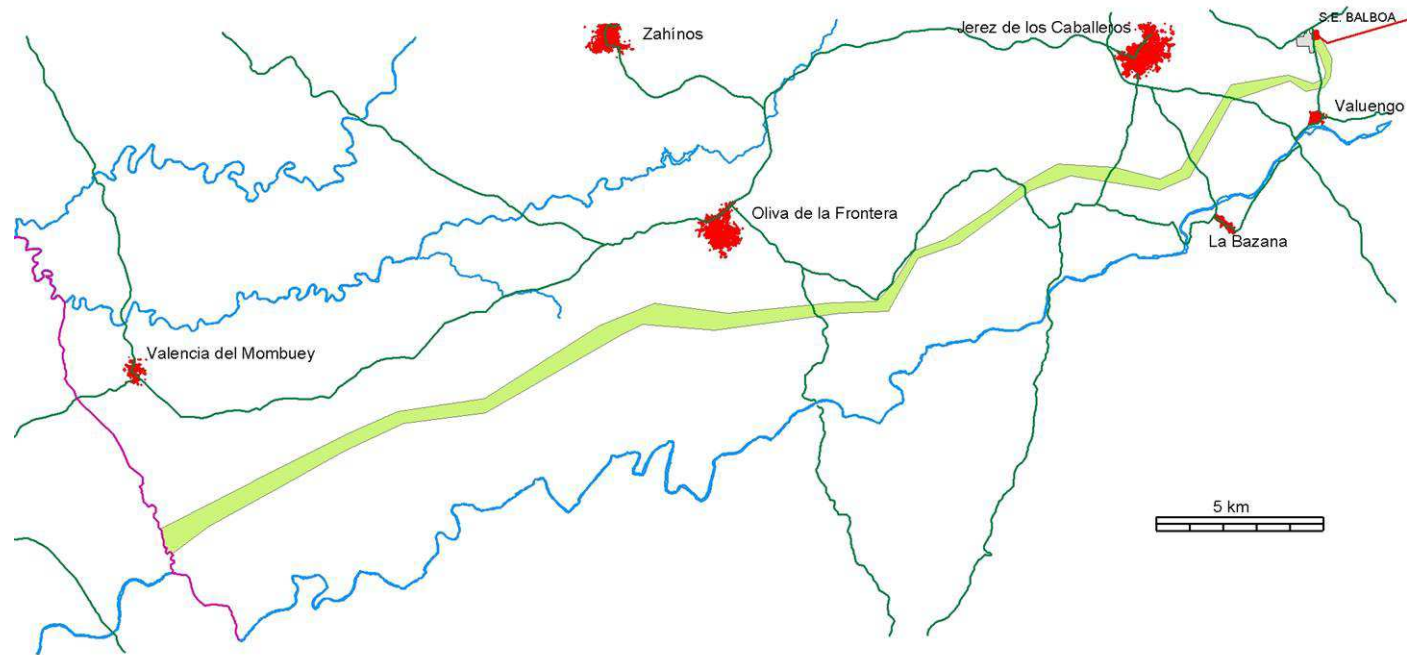


Alternativa de menor impacto



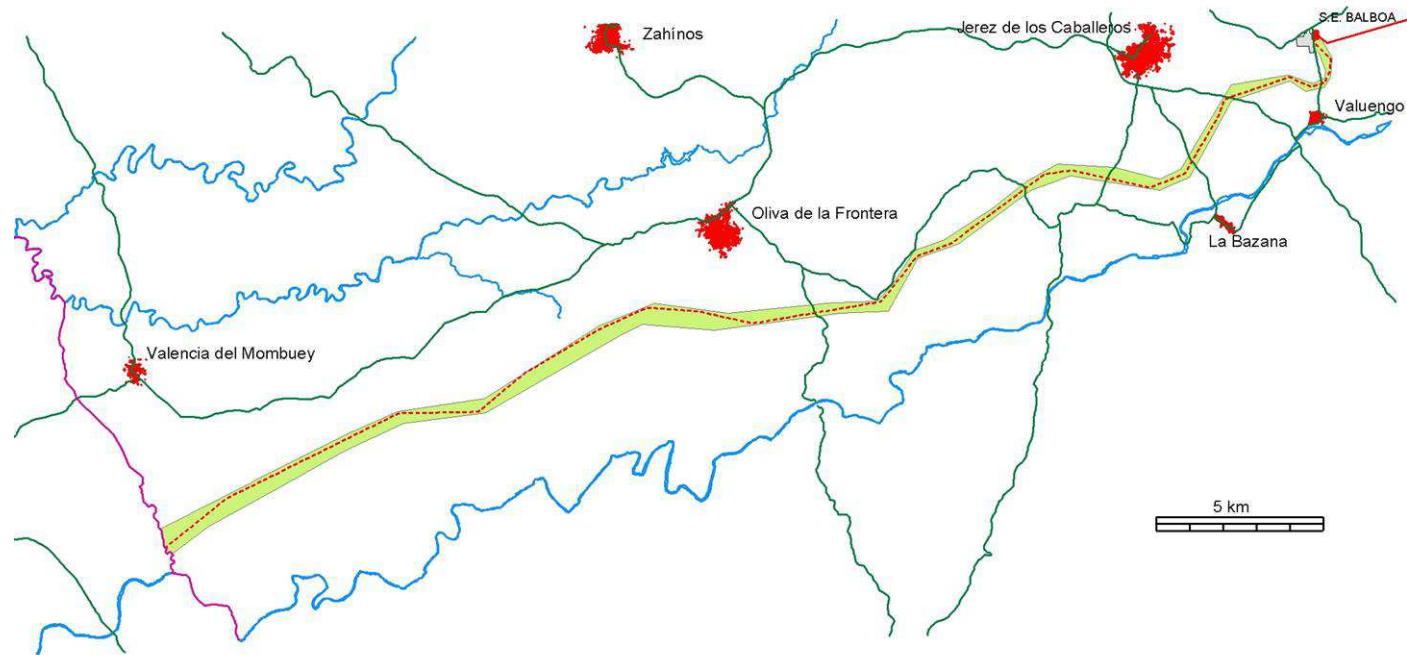


Alternativa de menor impacto





Trazado de la instalación





Trazado de la instalación

